

BROMLEY ESTATES

Marbella



HOUSE 5 BEDROOMS 3 BATHROOMS IN COIN

 Coin

REF# R5314471 €420,000

BEDS

5

BATHS

3

BUILT

173 m²

PLOT

6750 m²

TERRACE

32 m²

Set in a peaceful location with beautiful open views over the village of Alhaurín el Grande, this delightful single-level country home offers the perfect blend of privacy, comfort and Andalusian charm.

The main house features:

- A fully equipped kitchen with direct access to a large terrace
- A separate pantry
- A bright living room
- A dining room with fireplace, perfect for cosy evenings
- 3 comfortable bedrooms
- 2 bathrooms, including an en-suite in the master bedroom
- A separate utility room

? A true highlight: the covered terrace

The kitchen opens onto a spacious covered terrace/veranda that serves as an additional living area.

+34 952 939 460 · info@bromleyestatesmarbella.com Urbanizacion El Rosario, CN340, Km 188, Marbella, Malaga 29603

BROMLEY ESTATES

Marbella.

Currently used as a dining space, it can be fully opened during summer, allowing year-round enjoyment.

Large glass doors offer stunning views of the swimming pool, garden and surrounding countryside.

???? Independent guest apartment

The property also benefits from a charming guest apartment with kitchenette and bathroom — ideal for visiting family and friends or as a potential rental opportunity.

???? Great potential for extension

At the rear of the house, a large storage room — currently used for gardening equipment — could easily be incorporated into the main house for additional living space.

Originally, the house featured 3 bedrooms, a separate dining room and a living room, meaning the original layout can be reinstated if desired.

???? Ideal location:

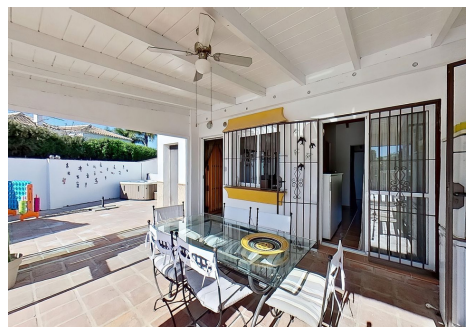
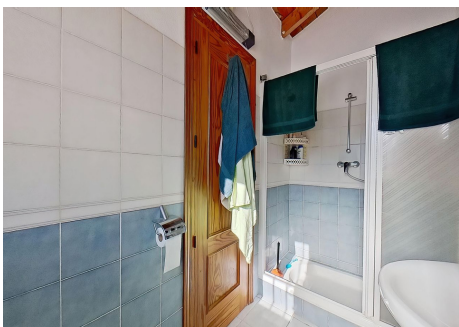
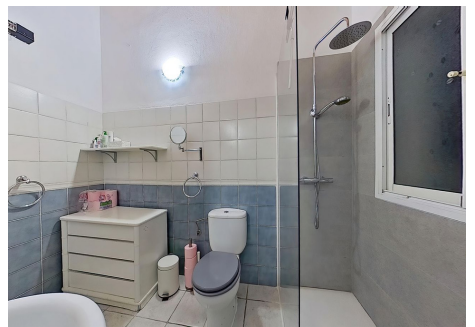
- 4.5 km to La Trocha shopping centre
- 6 km to Alhaurín el Grande town centre
- Approx. 1 km to the A355
- 30 minutes to Málaga Airport

This property offers the perfect combination of countryside tranquillity and convenient access to amenities — ideal as a permanent residence or holiday retreat under the Andalusian sun.



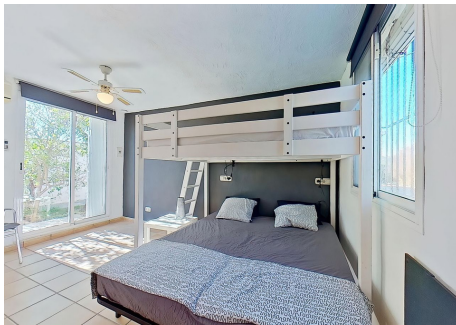
BROMLEY ESTATES

Marbella



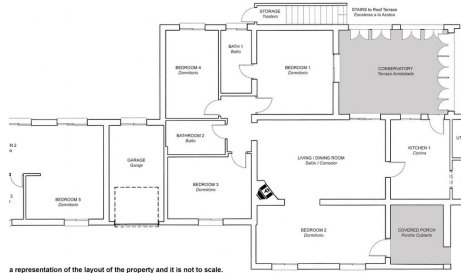
BROMLEY ESTATES

Marbella



BROMLEY ESTATES

Marbella



a representation of the layout of the property and it is not to scale.
a representación de la distribución de la propiedad y no está a escala.