



PENTHOUSE 4 BEDROOMS 4 BATHROOMS IN BENAHAIVIS

📍 Benahavis

REF# R5314858 €1,490,000

BEDS

4

BATHS

4

BUILT

252 m²

TERRACE

115 m²

Exclusive South-Facing Penthouse with Spectacular Panoramic Views in Banahavis.

This exceptional south-facing penthouse is located in a peaceful and prestigious residential complex, surrounded by nature and offering breathtaking panoramic views of the golf course, the Mediterranean Sea, and the mountains.

Flooded with natural light, this spacious and elegant property provides an atmosphere of tranquillity, privacy, and comfort. The expansive terraces invite you to relax and enjoy the magnificent sea views and stunning sunsets in complete serenity.

Designed for those who appreciate exclusivity and refined living, this unique penthouse occupies the entire top floor, making it the only residence on that level and ensuring an exceptional degree of privacy.

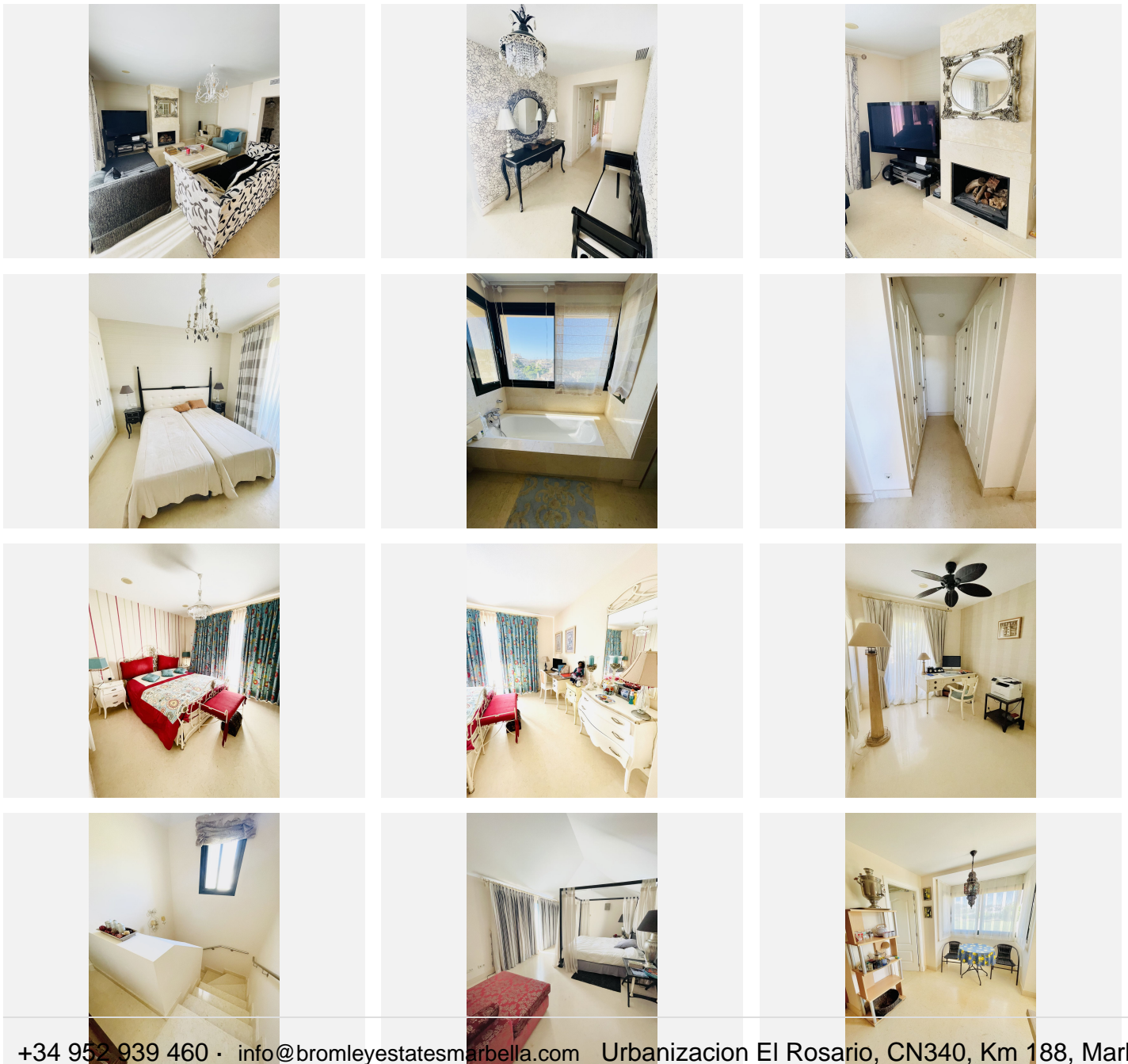
BROMLEY ESTATES

Marbella

The secure gated community offers 24-hour security, beautifully landscaped gardens, three swimming pools (including one indoor heated pool), a gymnasium, sauna, and Jacuzzi.

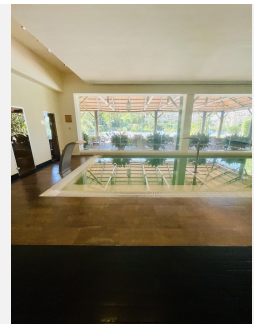
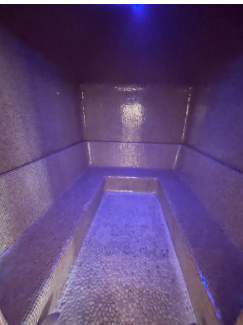
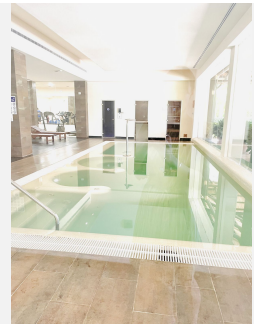
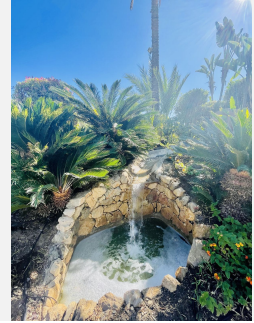
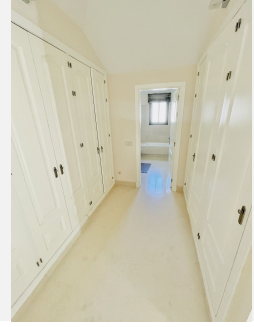
The penthouse features a fully fitted kitchen, separate laundry room, marble floors, underfloor heating, hot and cold air conditioning, fireplace, double glazing, alarm system, two private garage spaces, and a storage room.

A truly outstanding property for those seeking luxury, comfort, privacy, and some of the most beautiful views on the Costa del Sol.



BROMLEY ESTATES

Marbella



BROMLEY ESTATES

Marbella

