

BROMLEY ESTATES

Marbella



MIDDLE FLOOR APARTMENT 2 BEDROOMS 2 BATHROOMS IN SOTOGRANDE

📍 Sotogrande

REF# R5317837 €900,000

BEDS

2

BATHS

2

BUILT

133 m²

TERRACE

66 m²

In the heart of Village Verde, La Reserva de Sotogrande, you will find this modern two-bedroom apartment that combines contemporary design, comfort, and a unique lifestyle in a peaceful and secure environment. Built in 2023 and with 133 m² of carefully distributed space, the apartment features two en-suite bedrooms, each with its own private terrace overlooking the forest, gardens, and the pool. The open kitchen integrates with a spacious, light-filled living room that opens onto a 65 m² main terrace overlooking the communal pool, perfect for relaxing or hosting guests. A guest toilet, built-in closets, and a storage room add convenience, while two private parking spaces complete the property.

The apartment has underfloor heating and air conditioning through an arothermal system, ensuring comfort and energy efficiency throughout the year. Its southeast orientation allows natural light to flood the spaces, and its location on the first floor with an elevator facilitates daily access.

Village Verde is a car-free family community that offers numerous facilities: main pool with sand bottom, children's pool, 25-meter pool, gardens, play areas, croquet field, and walking or running trails. The sense of community, green spaces, and proximity to an international school make it an ideal place for families.

+34 952 939 460 · info@bromleyestatesmarbella.com Urbanizacion El Rosario, CN340, Km 188, Marbella, Malaga 29603

BROMLEY ESTATES

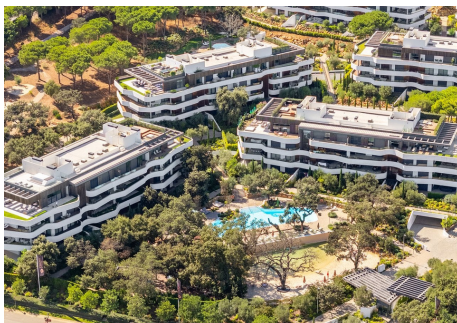
Marbella.

Sotogrande combines tranquility with top-level leisure and sports. The area features a picturesque marina with restaurants and shops, as well as five 18-hole golf courses, including the prestigious Valderrama. With Marbella and Gibraltar a short drive away, this apartment represents a unique opportunity to enjoy modern living in one of the most coveted places in southern Spain.



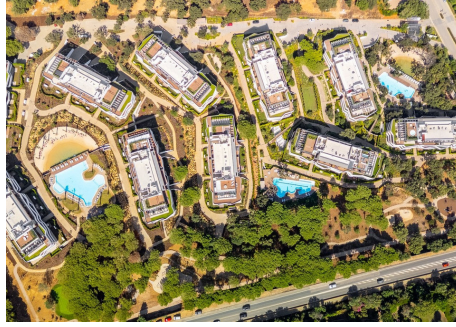
BROMLEY ESTATES

Marbella



BROMLEY ESTATES

Marbella



Apartamento 2D
Piscina Privada

APT 213

AREA	BW	0.210.000
AREA CONSTRUIBLE	1.000 m ²	102.000 m ²
AREA COBERTURA	1.000 m ²	102.000 m ²
TERRAZA COBERTA	4.000 m ²	408.000 m ²
TERRAZA DESCUBIERTA	100 m ²	10.200 m ²
TOTAL TERRAZA	4.100 m ²	418.200 m ²
TOTAL AREA LOTE	1.400 m ²	142.200 m ²

INCLUIDO EL PAGO DE ARRANQUE Y 1 TRACTO

AREA 0

01