

BROMLEY ESTATES

Marbella



PENTHOUSE 3 BEDROOMS 3 BATHROOMS IN MARBELLA

📍 Marbella

REF# R5321854 €975,000

BEDS

3

BATHS

3

BUILT

135 m²

TERRACE

45 m²

We are delighted to present this fabulous 3 bedroomed South west facing apartment situated on the 3rd floor which is located on the prestigious area of Marbella known as the Golden mile within close proximity to the famous Puente Romano Hotel Resort and walking distance to the beach, and central Marbella. Set within a secure, gated complex with on-site security patrol.

The Accommodation is bright and spacious and offers a large lounge/dining area, a fully equipped kitchen with a utility room adjacent. There are 3 bathrooms all complete with showering facilities.

There are three double bedrooms, where the master bedroom enjoys a full en-suite bathroom complete with bath and an overhead shower, the room has double glass fronted patio doors leading onto a terrace which enjoys afternoon sunshine due to its westerly facing. There are a further two double bedrooms with adequate storage/wardrobe space. Within this annex there is another bathroom with a standalone shower unit.

+34 952 939 460 · info@bromleyestatesmarbella.com Urbanizacion El Rosario, CN340, Km 188, Marbella, Malaga 29603

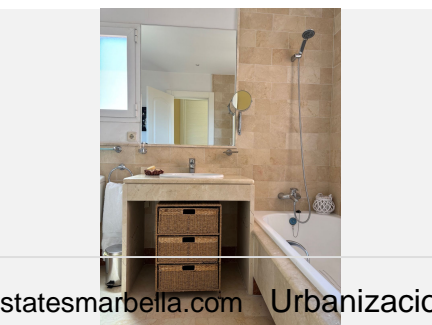
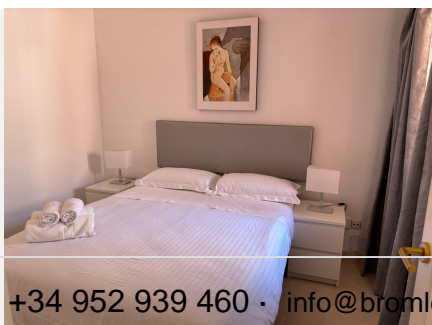
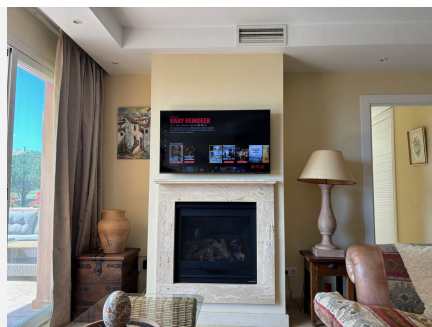
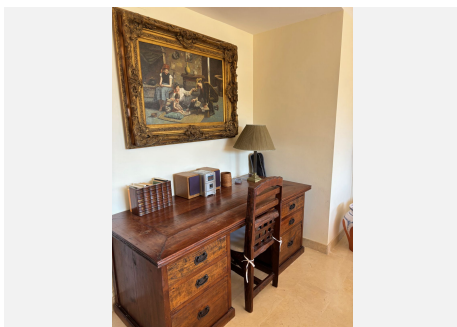
BROMLEY ESTATES

Marbella

From the lounge there are large glass fronted sliding patio doors leading to a spacious terrace where you can enjoy more sea views, there is sufficient room for dining out, Barbequing and relaxing whilst soaking up the South Westerly Sunshine.

The property has air conditioning hot and cold – There are currently plans drawn up to make this property a 4 bed which is easy to do.

Within the complex there is communal parking, there is a large free to form swimming pool, Gymnasium, sauna & Jacuzzi all set within immaculate communal gardens with exotic plants and shrubs which are immaculately maintained due to the organised and well-run community.



BROMLEY ESTATES

Marbella

