



## PENTHOUSE DUPLEX 3 BEDROOMS 3 BATHROOMS IN SELWO

📍 Selwo

REF# R5348116 €799,000

BEDS

3

BATHS

3

BUILT

120 m<sup>2</sup>

TERRACE

92 m<sup>2</sup>

This duplex penthouse is located within the contemporary Ágora development in Altos de la Resina, Estepona, an area that is quietly gaining a lot of attention for its space, views and proximity to everything.

The apartment is distributed over two levels and immediately feels bright and open. The main living area flows naturally into a spacious terrace through large sliding doors, which makes the entire space feel bigger and more connected to the outdoors. It's the kind of layout that works just as well for everyday living as it does for hosting.

There are three comfortable bedrooms and three bathrooms, which gives a lot of flexibility whether you're using it as a main residence or a second home. Upstairs, the private solarium really completes the property. It's a space where you can fully enjoy the climate here, whether that's relaxing during the day or having dinner in the evening with complete privacy.

# BROMLEY ESTATES

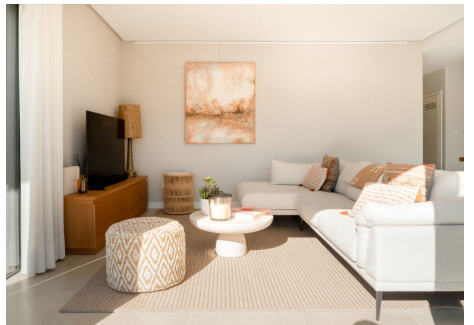
*Marbella*

With around 120 m<sup>2</sup> built and close to 92 m<sup>2</sup> of outdoor space, there is a very nice balance between interior comfort and outdoor living, which is exactly what most buyers are looking for in this area.

The property is sold fully furnished, so it's ready to move into straight away without needing to think about anything else.

It also includes underground parking, a storage room and benefits from a modern, energy efficient construction.

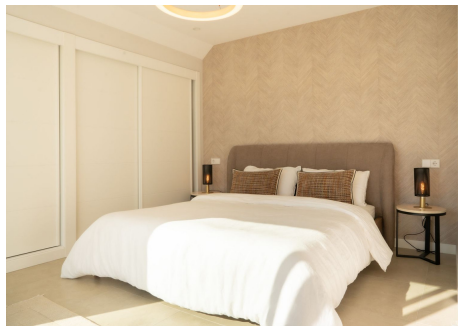
Overall, this is a very complete penthouse in a growing area of Estepona, offering both tranquillity and easy access to golf, beaches and all daily amenities.



+34 952 930 460 • info@bromleyestatesmarbella.com Urbanizacion El Rosario, CN340, Km 188, Marbella, Malaga 29603

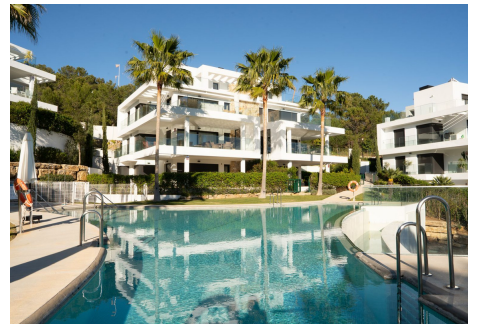
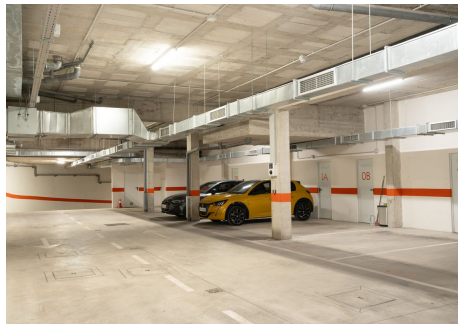
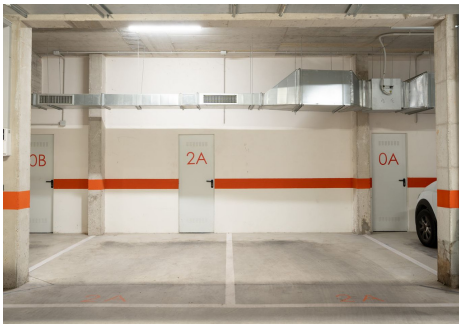
# BROMLEY ESTATES

*Marbella*



# BROMLEY ESTATES

*Marbella*



# BROMLEY ESTATES

*Marbella*

