



MIDDLE FLOOR APARTMENT 2 BEDROOMS 1 BATHROOM IN CALAHONDA

📍 Calahonda

REF# R5357458 €315,000

BEDS

2

BATHS

1

BUILT

87 m²

TERRACE

24 m²

Beautiful first-floor 2-bedroom apartment located in the upper part of Calahonda.

Description

Discover this beautiful 2-bedroom apartment located in the upper part of Calahonda, offering truly breathtaking, uninterrupted sea views that can be enjoyed from the comfort of your own home.

The property features two well-proportioned bedrooms, a bright and inviting living space, and a terrace perfectly positioned to take in the panoramic coastal scenery. The terrace also includes a convenient store room, providing valuable extra space for storage. Whether you're looking for a permanent residence, a holiday retreat, or an investment opportunity, this apartment delivers on all fronts.

Residents benefit from a secure underground parking space and access to well-maintained communal pools, ideal for relaxing and enjoying the Mediterranean lifestyle. The surroundings are peaceful and idyllic,

+34 952 939 460 · info@bromleyestatesmarbella.com Urbanizacion El Rosario, CN340, Km 188, Marbella, Malaga 29603

BROMLEY ESTATES

Marbella

with lush green areas just behind the property—perfect for scenic walks, whether alone or with dogs.

Set in a tranquil yet convenient location, this apartment combines natural beauty with everyday comfort, making it a truly special find on the Costa del Sol.

Calahonda is one of the Costa del Sol's most sought-after residential areas, perfectly positioned between Marbella and Fuengirola. Known for its relaxed atmosphere and natural beauty, it offers an ideal balance between peaceful coastal living and easy access to vibrant towns and amenities.

The area is particularly popular for its stunning sea views, green surroundings, and well-established community. Calahonda is home to a wide range of restaurants, cafés, shops, and essential services, making it convenient for both full-time residents and holidaymakers. Its proximity to the beach means you're never far from the Mediterranean, while excellent road connections provide quick access to Málaga Airport and nearby hotspots like Marbella's Old Town and Puerto Banús.

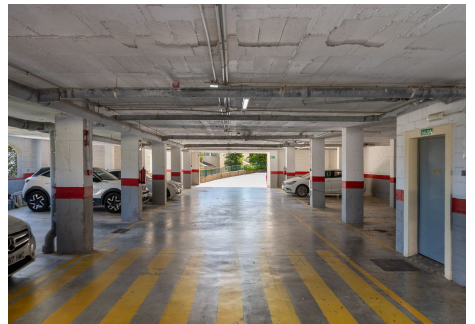
One of Calahonda's standout features is its abundance of green spaces and walking routes, including scenic trails through natural areas, making it perfect for outdoor enthusiasts and dog owners alike. The area also offers several golf courses, sports facilities, and family-friendly amenities, contributing to its appeal for a wide range of buyers.

Whether you're seeking a tranquil retreat or a well-connected base on the coast, Calahonda offers a lifestyle that combines comfort, convenience, and the beauty of southern Spain.



BROMLEY ESTATES

Marbella



BROMLEY ESTATES

Marbella

