

# BROMLEY ESTATES

*Marbella*



## PENTHOUSE DUPLEX 2 BEDROOMS 2 BATHROOMS IN NUEVA ANDALUCIA

📍 Nueva Andalucia

REF# R5358310 €1,190,000

BEDS

2

BATHS

2

BUILT

109 m<sup>2</sup>

TERRACE

51 m<sup>2</sup>

POCKET LISTING – not to be published anywhere.

An exceptional and highly exclusive top-floor duplex apartment in the heart of Aloha, this is a rare opportunity to own a fully rebuilt luxury residence in the gated community of Los Dragos, combining designer interiors, panoramic views, an elevator to the rooftop terrace and an outstanding lifestyle setting.

This beautifully renovated 2-bedroom, 2-bathroom apartment has been completely gutted and rebuilt to luxury standards, with absolutely everything brand new throughout. From the plumbing and electrical systems to the air conditioning, flooring, kitchen, bathrooms, and finishes, every detail has been carefully executed to create a home of exceptional quality. High ceilings enhance the sense of space, while the south-east orientation allows for an abundance of natural light all day long. The interiors are elevated by bespoke Italian furniture and custom Italian decoration, giving the property a refined, elegant, and truly turnkey feel. An elevator provides easy access to the private rooftop solarium, adding both comfort and

+34 952 939 460 · info@bromleyestatesmarbella.com Urbanizacion El Rosario, CN340, Km 188, Marbella, Malaga 29603

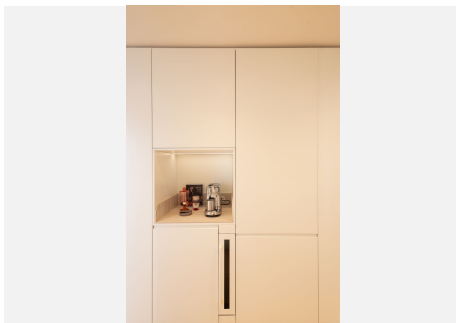
# BROMLEY ESTATES

*Marbella*

exclusivity to this unique home.

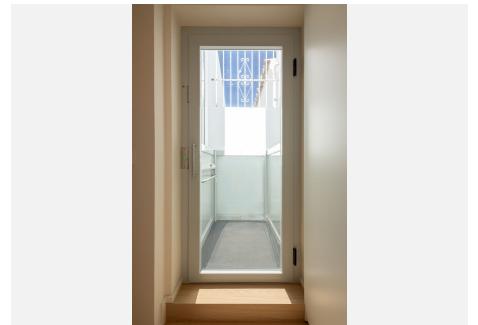
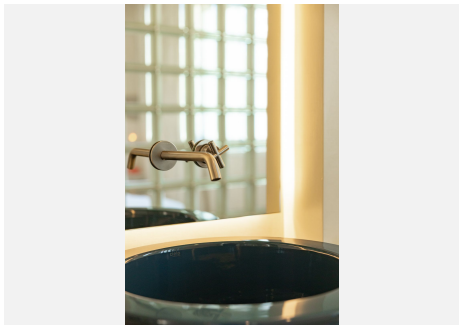
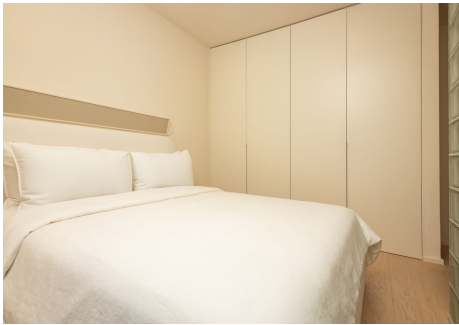
The rooftop terrace is one of the apartment's standout features, offering open panoramic views across La Concha mountain, Aloha Golf, and partial sea views. Designed as a private retreat, it features a comfortable lounge area and space for a BBQ, making it ideal for relaxing in the sun, entertaining guests, or enjoying the peaceful surroundings from an elevated position.

Set within the gated urbanisation of Los Dragos, residents enjoy access to an impressive range of amenities including padel and tennis courts, a gym, sauna, squash court, and clubhouse. The property also includes open covered parking. Its location in Aloha is equally attractive, within walking distance of Aloha Gardens and its wide selection of restaurants, bars, and cafés. Whether as a stylish permanent residence, a lock-up-and-leave holiday home, or a smart investment opportunity, this is a standout property in one of Marbella's most desirable areas.



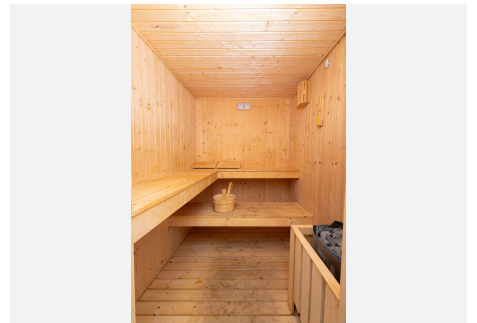
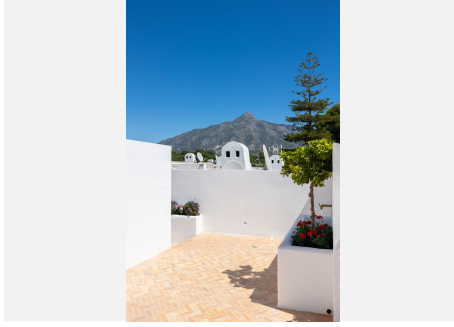
# BROMLEY ESTATES

*Marbella*



# BROMLEY ESTATES

*Marbella*



# BROMLEY ESTATES

*Marbella*

