

BROMLEY ESTATES

Marbella



MIDDLE FLOOR APARTMENT 2 BEDROOMS 2 BATHROOMS IN MANILVA

📍 Manilva

REF# R5358472 €599,000

BEDS

2

BATHS

2

BUILT

143 m²

TERRACE

43 m²

! REDUCED PRICE ! PROTECTED PANORAMIC SEA VIEWS UNIT I TOURIST LISENCE

?OWN THE EDGE. LIVE THE VIEW. INVEST SMART. MOVE FROM THE CROWDED MARBELLA TO THE PEACE?

PRICE DROPPED DOWN! Enjoy your summer holiday and / or immediate passive income from this summer already.

Manilva, Costa del Sol | The New Gold Triangle | GIGA luxury projects are on the way to be ready in the area to increase ROI

Premium, new property with active Tourist license & income ready for sale. One of the best-positioned unit of this residence with panoramic sea views and privacy

If you're looking for a high premium, new apartment (2023) with guaranteed unbeatable panoramic sea

+34 952 939 460 · info@bromleyestatesmarbella.com Urbanizacion El Rosario, CN340, Km 188, Marbella, Malaga 29603

BROMLEY ESTATES

Marbella.

views, strong rental potential (from 38.000€/yearly renting income) , and future-proof value in a fast-growing location , this is your ideal place.

Strategically positioned between Estepona & Sotogrande, where ROI is accelerating and demand is outpacing supply. Giga luxury projects are on the way to increase massively the ROI in 2-4 years.

- ? 300m walk to the beach
- ? Mountain paths, dog park, parques, lifestyle amenities
- ? Seamless access to the A7
- ? Peaceful, green area

THE APARTMENT | New built to perform. This isn't just a home. It's a lifestyle asset.

- ? 2 Bedrooms | 2 Bathrooms | Living room with American kitchen and dining room area | All rooms have panoramic sea views with direct access to the terrace
- ? 99 m²+ of refined interior space
- ? Oversized 40 m²+ terrace with protected panoramic sea views
- ? Smart windows & shutters & mosquito nets
- ? App-controlled A/C system
- ? Whole-home water purification system
- ? Fitted wardrobes & and kitchen with home appliances
- ? Private garage & storage room
- ? Additional home water cleaning system
- ? Low community fees & IBI
- ? Premium interior design which can be an option for further negotiation (20.000eur)

THE COMMUNITY | Wellness Resort-Level Living. Designed for long-term value, comfort, and sustainability.

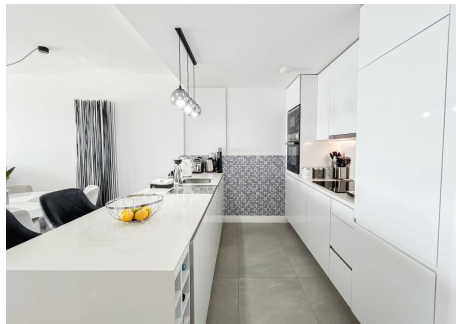
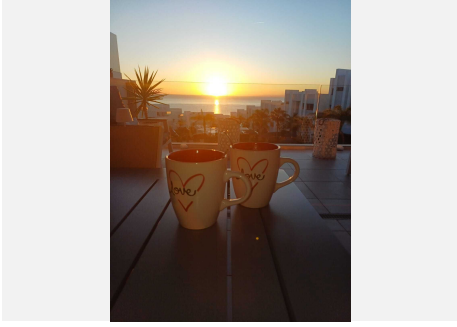
- ? Solar panels & community water softener system
- ? 3 swimming pools (2 adults & 1 kid pool)
- ? Indoor & outdoor gym
- ? Sauna & steam room
- ? Playground & picnic area
- ? Chill-out ?zones ?& ?entertainment ?room
- ? Lush ?botanical gardens
- ? Security ?camera system
- ? ?Defibrillator ?in ?place
- ? ?Healthy reserve community funds

For full details ?and ?private appointment ?scheduling ?contact ?us.

Assets ?like ?this ?don't ?wait.

BROMLEY ESTATES

Marbella



BROMLEY ESTATES

Marbella

