

BROMLEY ESTATES

Marbella



TOWNHOUSE 3 BEDROOMS 2 BATHROOMS IN MANILVA

📍 Manilva

REF# R5359597 €335,000

BEDS

3

BATHS

2

BUILT

130 m²

This immaculate townhouse, located in Manilva, offers a seamless open-plan layout with bright, spacious interiors, super outdoor living areas, and panoramic views of both the sea and surrounding mountains. Beautifully presented and maintained in excellent condition, the property features three generous double bedrooms, two bathrooms, a private garage with additional storage, and two large terraces designed to maximise outdoor enjoyment.

The home boasts an impressive open-plan design, beginning with a large, light-filled living and dining area complete with a fireplace and direct access to both the front and rear terraces. The modern, fully fitted kitchen is open to the living space and offers ample storage, extensive work surfaces, a generous breakfast bar, and a separate utility room. A guest cloakroom is also located on this level.

Upstairs, a feature mezzanine leads to three double bedrooms, all with fitted wardrobes. The master bedroom benefits from a full en-suite bathroom and access to a private terrace with panoramic views of the coastline. A second bathroom serves the remaining bedrooms. Additional features include marble flooring

+34 952 939 460 · info@bromleyestatesmarbella.com Urbanizacion El Rosario, CN340, Km 188, Marbella, Malaga 29603

BROMLEY ESTATES

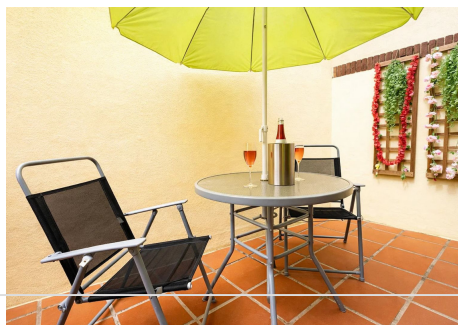
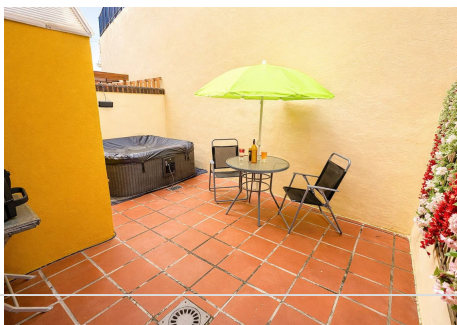
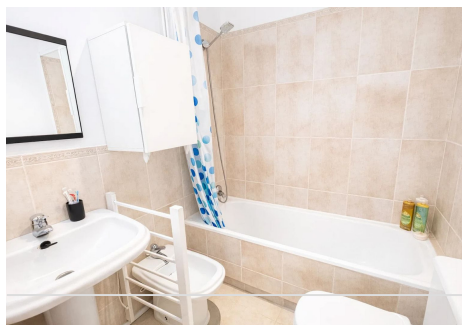
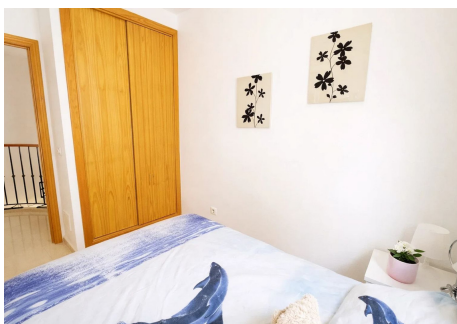
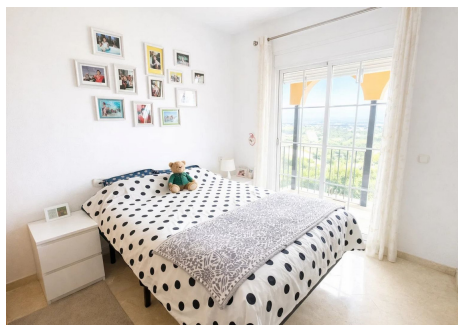
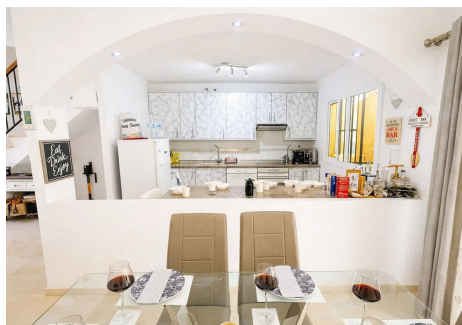
Marbella

throughout, hot and cold air conditioning, and an integrated alarm system.

The front terrace, accessed from the living room, is east-facing and enjoys lovely views across the communal pool towards the mountains and sea.

To the rear, a private terrace accessed via the dining area provides an ideal setting for al fresco dining and entertaining in complete privacy.

The master bedroom also features its own terrace, perfect for enjoying the morning sun alongside spectacular views of the sea, mountains, and surrounding vineyards.



BROMLEY ESTATES

Marbella

