

# BROMLEY ESTATES

*Marbella*



## HOUSE 6 BEDROOMS 5 BATHROOMS IN ESTEPONA

📍 Estepona

REF# R5361265 €2,750,000

BEDS

6

BATHS

5

BUILT

520 m<sup>2</sup>

PLOT

5900 m<sup>2</sup>

TERRACE

550 m<sup>2</sup>

Exclusive estate close to the centre and beach of Estepona.

Situated in the privileged setting of Estepona, in Reinoso just 2 km from the centre and beach, this extraordinary property combines privacy, spaciousness, and a comprehensive range of leisure and wellness features on a 5,860 m<sup>2</sup> plot.

The main residence boasts a built area of 1,096 m<sup>2</sup>, laid out in a functional and elegant manner. It features four spacious bedrooms, as well as an office that can be converted into a fifth bedroom, in addition to four full bathrooms and a guest toilet. The day area offers a main living room and a cosy TV lounge, as well as an independent dining room.

The fully equipped kitchen includes a breakfast area and a laundry room, designed for maximum daily comfort. There is also a spectacular wine cellar designed for entertaining, equipped with a bar and a dedicated space for wine storage. The property incorporates a full wellness area with a private spa, including a sauna, whirlpool bath, hydromassage shower, and gymnasium.

+34 952 939 460 · info@bromleyestatesmarbella.com Urbanizacion El Rosario, CN340, Km 188, Marbella, Malaga 29603

# BROMLEY ESTATES

*Marbella*

Outdoors, the spaces are carefully designed for relaxation and enjoyment: a porch and solarium next to the swimming pool create an ideal setting for leisure and rest. The estate also features a garage for two vehicles with automated access.

Among its exclusive features, highlights include:

- An elevator with capacity for four people
- 110 m<sup>3</sup> swimming pool with a stunning 3-metre-high waterfall
- Private tennis court
- Equestrian area with changing rooms, two horse stalls, and storage
- Main entrance with automatic gate
- 150-metre printed concrete walkway, decorated with pergolas covered with blue wisteria, wooden benches, and a semicircular fountain with 16 jets

The estate is equipped for efficient maintenance of its extensive green areas, with a 100,000-litre irrigation water tank and its own well with a submersible pump.

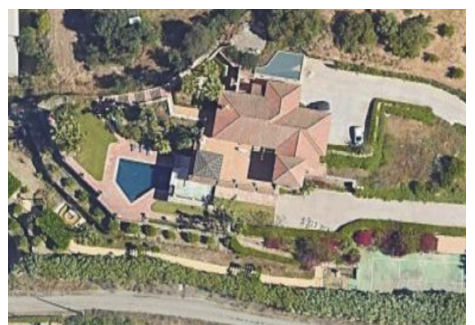
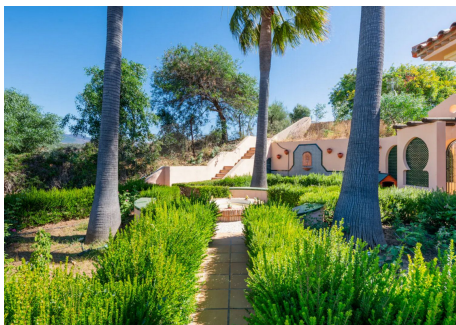
The landscaping includes an elegant French garden with rose bushes, palm trees, ornamental fountain, and ceramic benches, as well as two orchards: one with a variety of fruit trees and another with approximately 70 navelate orange trees.

The entire property is completed by illuminated gardens, enhancing the beauty of the estate also at night.



# BROMLEY ESTATES

*Marbella*



# BROMLEY ESTATES

*Marbella*

