



## PENTHOUSE APARTMENT 2 BEDROOMS 2 BATHROOMS IN SELWO

📍 Selwo

REF# R5362792 €395,000

BEDS

2

BATHS

2

BUILT

114 m<sup>2</sup>

TERRACE

27 m<sup>2</sup>

Beautiful top-floor, south-facing apartment with uninterrupted sea views that will never be disturbed, located in the popular and peaceful area of Selwo. All within walking distance of new padel courts, a modern gym and spa, a selection of bars and restaurants, and the local golf course, enhancing both lifestyle and rental appeal.

This bright and spacious 2-bedroom, 2-bathroom home offers excellent flow throughout, with an open-plan living, dining and kitchen area leading directly onto a front terrace with stunning sea views, perfect for relaxing or entertaining, complete with a seating area and BBQ.

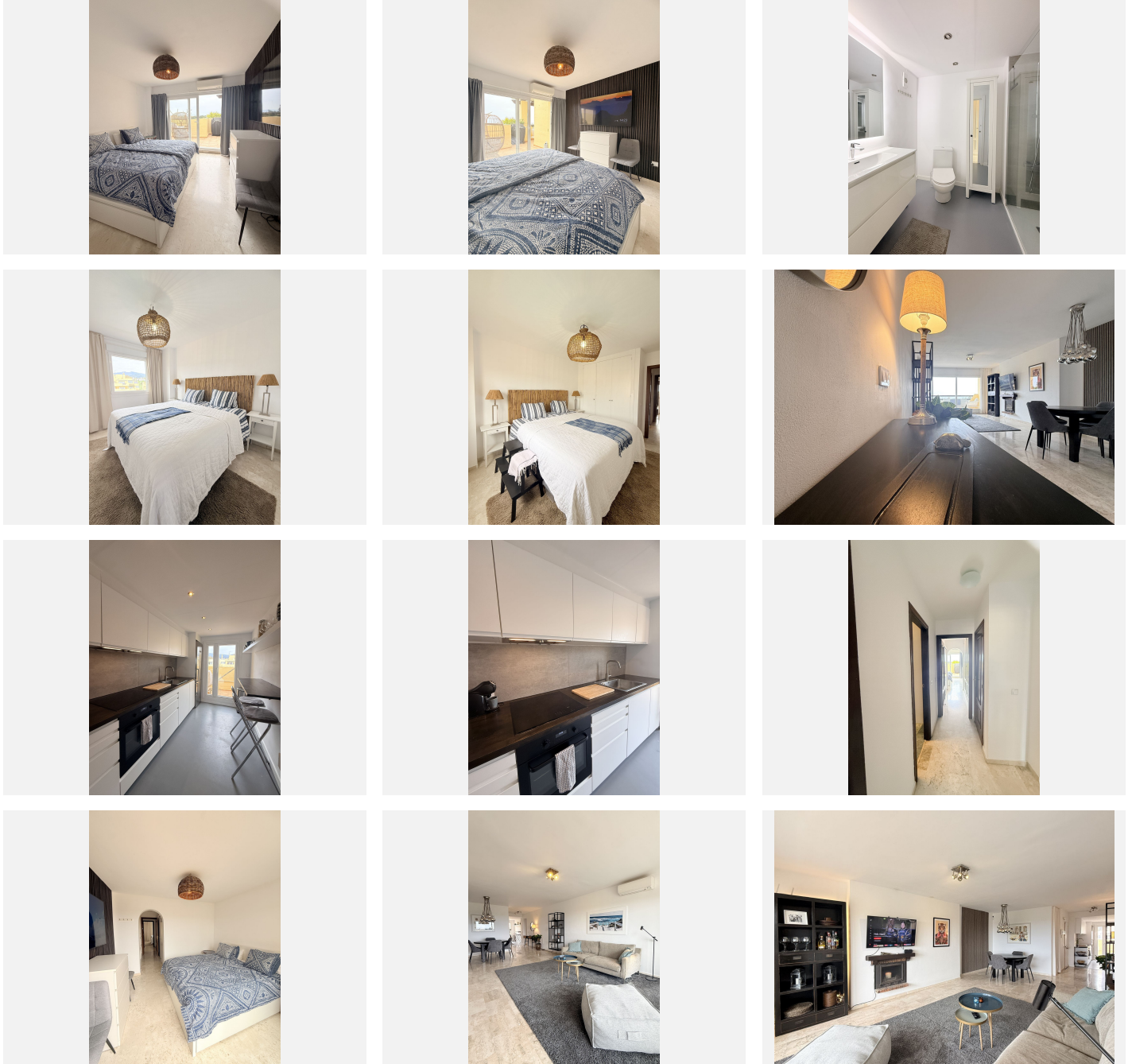
To the rear, a secondary terrace is currently used as a utility area, overlooking the well-maintained communal gardens and swimming pool.

# BROMLEY ESTATES

## *Marbella*

The property features a generous guest bedroom with beautiful mountain views, served by a family bathroom. The master bedroom is positioned to the front, enjoying en-suite facilities, open sea views, and direct access to the terrace, seamlessly connecting indoor and outdoor living.

Set within a well-kept community in a quiet yet convenient location, this apartment is ideal as a full-time residence, holiday home or investment opportunity.



# BROMLEY ESTATES

*Marbella*

