



## PENTHOUSE 2 BEDROOMS 2 BATHROOMS IN ESTEPONA

📍 Estepona

REF# R5363077 €710,000

BEDS

2

BATHS

2

BUILT

112 m<sup>2</sup>

TERRACE

47 m<sup>2</sup>

This sophisticated penthouse offers a unique modern urban living experience and stands out for its impressive panoramic views of the sea, mountains, and old town, creating an unparalleled setting that invites relaxation and contemplation.

Located in a privileged area just steps away from the beach, the promenade, as well as the old town and a multitude of services and amenities concentrated in the center of Estepona, this property not only provides unique comfort but also a contemporary design.

From the very first moment, the elegant entrance hall sets the refined character of the home. The fluid and bright layout of the apartment is enhanced by an open-plan living room perfectly integrated with a dining area and a spacious kitchen with a central island and open views, maximizing space and natural light. The true highlight of this penthouse is its spectacular terrace conceived as a private oasis with direct access from the living room. Here the infinite views, a cozy chill-out area, are the perfect setting to enjoy the Mediterranean climate all year round.

+34 952 939 460 · [info@bromleyestatesmarbella.com](mailto:info@bromleyestatesmarbella.com) Urbanizacion El Rosario, CN340, Km 188, Marbella, Malaga 29603

# BROMLEY ESTATES

*Marbella.*

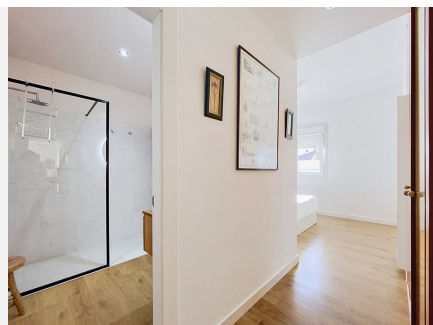
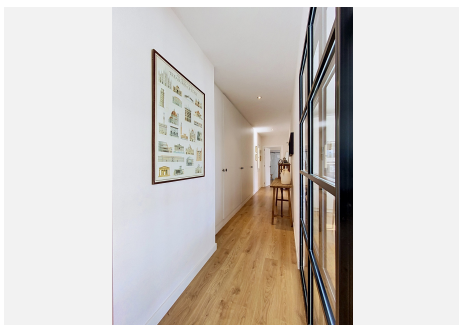
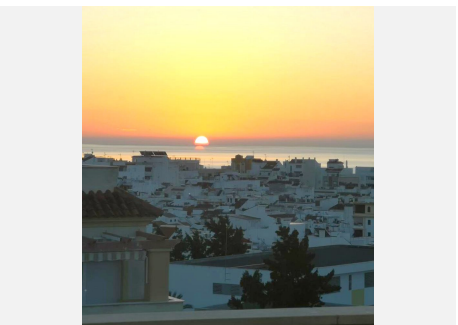
The property features two bedrooms, designed to ensure maximum comfort. The master suite, with its own private bathroom, provides an intimate retreat, while the second bedroom offers versatility and spaciousness. Additionally, an extra bathroom complements the functionality of the home.

To complete this exclusive offering, the apartment located on a high floor with an elevator is equipped with hot and cold air conditioning and also includes a parking space and storage room, ensuring daily convenience.



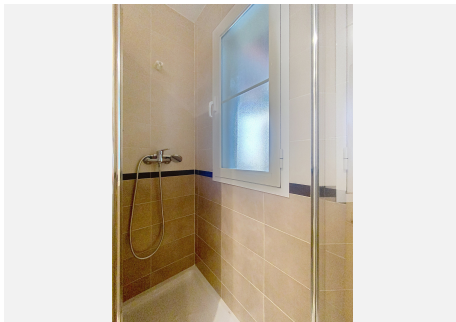
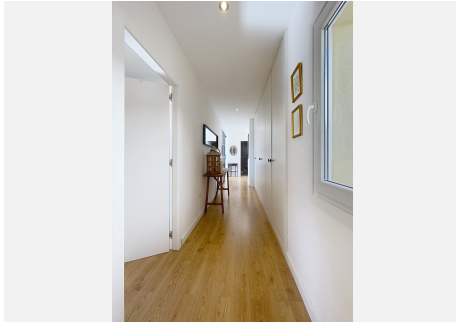
# BROMLEY ESTATES

*Marbella*



# BROMLEY ESTATES

*Marbella*



# BROMLEY ESTATES

*Marbella*

