



## PENTHOUSE 2 BEDROOMS 2 BATHROOMS IN BENALMADENA COSTA

📍 Benalmadena Costa

REF# R5363956 €549,000

BEDS

2

BATHS

2

BUILT

84 m<sup>2</sup>

TERRACE

95 m<sup>2</sup>

Exclusive penthouse with large south-facing rooftop terrace in El Higuierón, Benalmádena Costa

Dreaming of sun, views and generous outdoor living? This beautiful penthouse in the sought-after El Higuierón area of Benalmádena Costa offers a rare combination of comfort, privacy and Mediterranean lifestyle.

The apartment offers 81 m<sup>2</sup> of interior space with a bright and welcoming layout, featuring 2 bedrooms and 2 newly renovated bathrooms. The living room is full of natural light and opens directly onto the terrace, creating a seamless indoor-outdoor flow. The partially open kitchen has a modern style and works perfectly for both everyday living and holidays.

The real highlight is the impressive 80 m<sup>2</sup> private rooftop terrace with jacuzzi. Here you can enjoy sun all day, open views towards the coast and surrounding area, and plenty of space for dining, relaxing and

# BROMLEY ESTATES

*Marbella.*

entertaining. With its south-facing orientation, this home is ideal for long sunny breakfasts, lazy afternoons and warm evenings with friends.

The property is part of a popular residential community with swimming pool and green communal areas, all set in a peaceful and exclusive environment. Shops, restaurants and daily amenities are within easy reach, the beach is approximately 15 minutes away, and access to the motorway is quick and convenient.

This is an ideal property as a permanent home, a stylish holiday apartment or a strong investment opportunity on the Costa del Sol.

Contact us for price, more information or a viewing.

Penthouse, Benalmadena Costa, Costa del Sol.  
2 Bedrooms, 2 Bathrooms, Built 84 m<sup>2</sup>, Terrace 95 m<sup>2</sup>.

Orientation : South.

Condition : Good.

Pool : Communal.

Views : Sea, Mountain, Country, Panoramic.

Features : Solarium.

Furniture : Part Furnished.

Kitchen : Fully Fitted.

Garden : Communal.



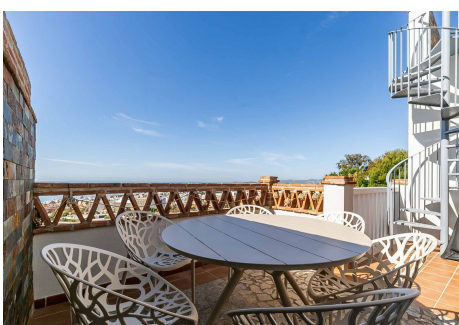
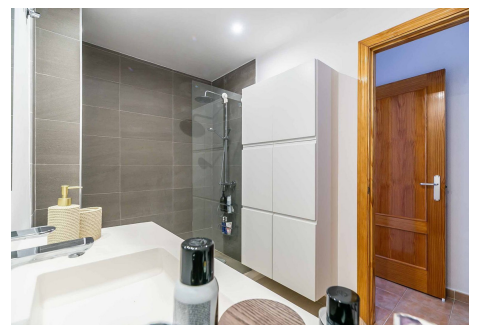
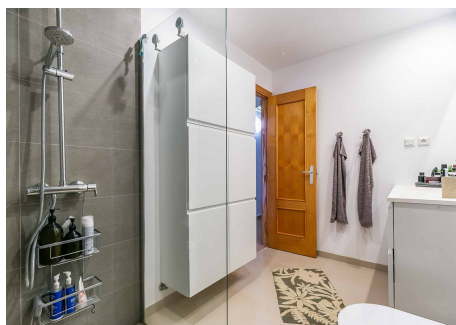
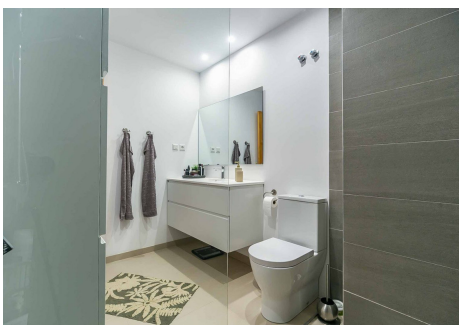
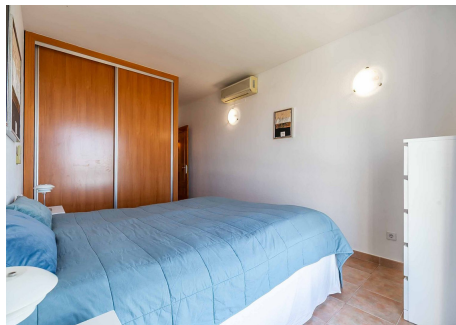
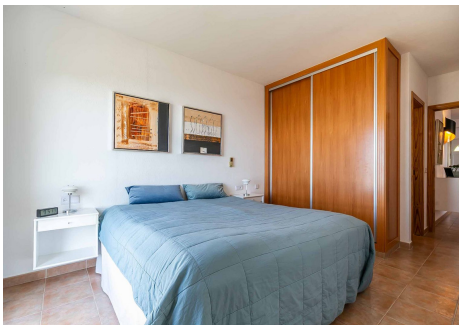
# BROMLEY ESTATES

*Marbella*



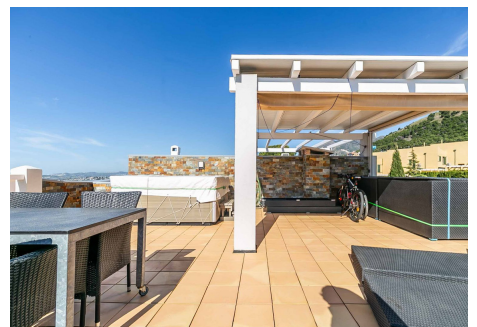
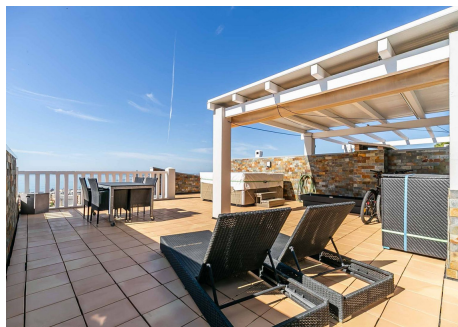
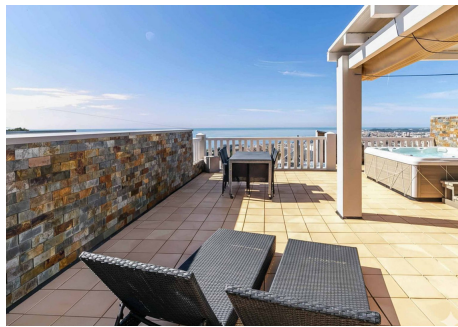
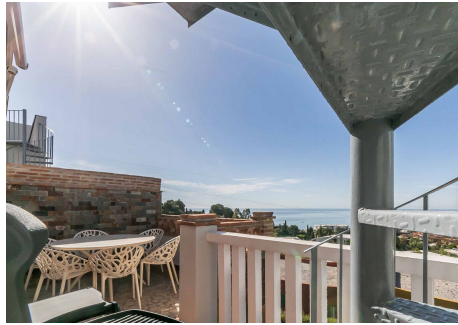
# BROMLEY ESTATES

*Marbella*



# BROMLEY ESTATES

*Marbella*



# BROMLEY ESTATES

*Marbella*

