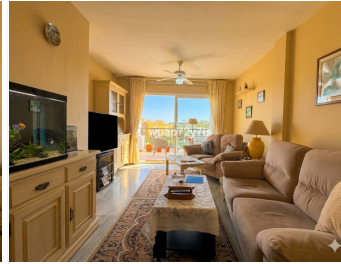


BROMLEY ESTATES

Marbella



MIDDLE FLOOR APARTMENT 2 BEDROOMS 2 BATHROOMS IN CALAHONDA

📍 Calahonda

REF# R5363968 €360,000

BEDS

2

BATHS

2

BUILT

87 m²

TERRACE

20 m²

Middle Floor Apartment with Stunning Sea Views

Discover this charming apartment ideally positioned in the lower part of Calahonda, Mijas Costa, just a short stroll from the beach and all essential amenities. With beautiful sea views and a highly convenient setting, this property offers the perfect blend of coastal living and everyday comfort.

Located within a sought-after community, everything you need is within walking distance—supermarkets, restaurants, cafés, shops, and public transport—making it an excellent choice for both a holiday retreat and a full-time residence.

Inside, the apartment offers a bright and spacious layout. The welcoming living and dining area opens onto a covered south-west facing terrace, the perfect spot to unwind while enjoying views of the Mediterranean. The fully fitted kitchen is semi-open to the living space and includes a separate utility room, combining

+34 952 939 460 · info@bromleyestatesmarbella.com Urbanizacion El Rosario, CN340, Km 188, Marbella, Malaga 29603

BROMLEY ESTATES

Marbella.

functionality with a sociable design.

The property comprises a generous master bedroom with en-suite bathroom, a second double bedroom, and an additional modern shower room, ideal for guests or family living.

Residents benefit from underground parking, lift access, and beautifully maintained communal areas, including three swimming pools and landscaped gardens—creating a tranquil environment to fully embrace the Costa del Sol lifestyle.

About Calahonda

Calahonda is one of the most established and desirable areas of Mijas Costa, known for its vibrant international community and relaxed coastal charm. Ideally located between Marbella and Fuengirola, it offers easy access to sandy beaches, golf courses, beach clubs, and scenic walking routes, all within just 30 minutes of Málaga Airport.

