

BROMLEY ESTATES

Marbella.



HOUSE 3 BEDROOMS 2 BATHROOMS IN BENAHAVIS

📍 Benahavis

REF# R5364019 €550,000

BEDS

3

BATHS

2

BUILT

138 m²

PLOT

320 m²

TERRACE

15 m²

Exclusive Detached Villa with Private Jacuzzi – Parque Botánico, Benahavís

Located in the secure and prestigious hills of Benahavís, this charming detached family home offers the perfect blend of Mediterranean tranquility and resort-style luxury. Situated within the sought-after Parque Botánico Las Lomas del Guadalmina urbanization, this property is designed for those seeking privacy and a high quality of life.

+2

Your Private Sanctuary

This villa is designed for comfort, ease of use, and maximum privacy:

Single-Level Living: The home features a practical layout all on one floor, providing seamless flow between living areas.

BROMLEY ESTATES

Marbella

Spacious Plot: The property sits on a private plot of 320 m

2

.

Generous Living Space: It boasts a total built area of 153.07 m

2

with a comfortable interior living space of 137.50 m

2

.

Private Jacuzzi & Garden: Relax in your own private jacuzzi located by the house, surrounded by landscaped garden areas and private walkways.

Ultimate Privacy: The villa is bordered by private green zones (ZV4) on multiple sides, ensuring a peaceful environment and a sense of freedom from neighbors.

World-Class Resort Facilities

As an owner within the Parque Botánico complex, you enjoy exclusive access to extensive communal amenities:

Wellness & Spa: Professional facilities including a luxury indoor heated pool, a relaxing sauna, and a communal jacuzzi for year-round enjoyment.

Swimming & Sun: Multiple large outdoor swimming pools set within lush, award-winning botanical gardens.

Active Lifestyle: Various sports facilities and beautiful walking trails throughout the secure, gated resort.

Location & Key Details

Year of Completion: The property was officially completed and registered in 2004.

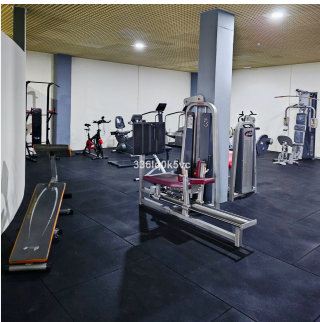
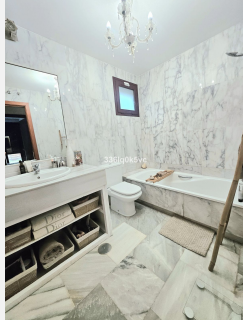
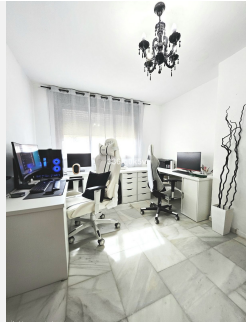
Prime Location: Situated in Benahavís, one of Spain's most exclusive municipalities, known for its natural beauty and proximity to the Guadalmina River.

Outdoor Living: Includes a spacious outdoor terrace integrated into the main structure, perfect for al fresco dining.

Are you looking for a private villa where you can enjoy your own jacuzzi while having access to the facilities of a luxury resort? This home in Benahavís offers an unparalleled lifestyle.

BROMLEY ESTATES

Marbella



BROMLEY ESTATES

Marbella

