



SEMI-DETACHED HOUSE 3 BEDROOMS 1.5 BATHROOM IN MANILVA

📍 Manilva

REF# R5364532 €320,000

BEDS

3

BATHS

1.5

BUILT

148 m²

PLOT

75 m²

TERRACE

50 m²

This incredible semi-detached house in Manilva Pueblo (Málaga), set in a privileged location, stands out for its stunning panoramic views and offers the perfect balance between tranquility, natural surroundings, and proximity to all amenities.

The property has 148 m² built, distributed across three spacious and bright bedrooms, one full bathroom, and an additional guest toilet. On the ground floor, there is a cozy living room integrated with a fully equipped kitchen, creating an open-plan space that provides great brightness, a sense of space, and pleasant views. On the same level, there is a large patio, ideal for installing a pool, relaxing, or enjoying outdoor moments.

Additionally, the property includes a space currently used as an office, with enough size to be converted into an independent apartment, adding great potential to the home.

BROMLEY ESTATES

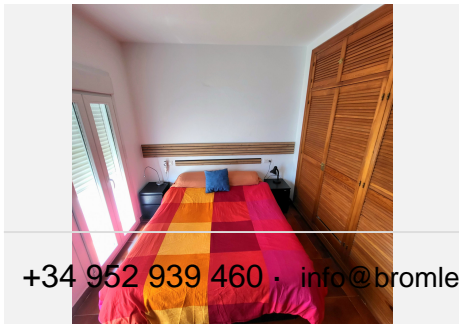
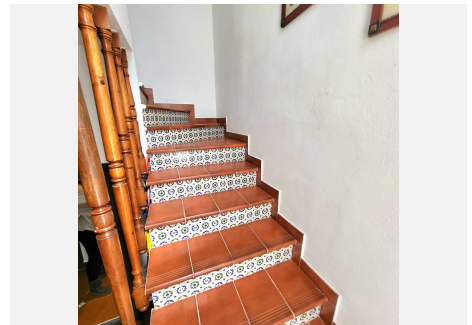
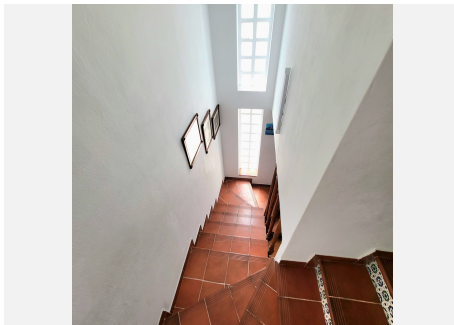
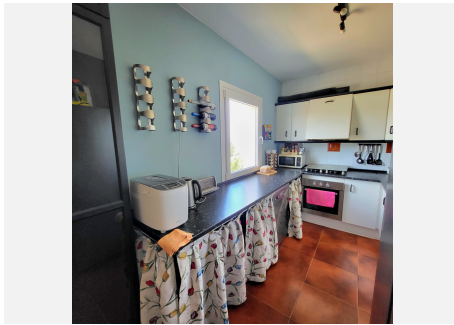
Marbella

On the rooftop, the property offers a fantastic solarium terrace equipped with a practical outdoor kitchenette, perfect for gatherings, outdoor dining, or relaxing while enjoying the views.

It also features a parking space that ensures convenient and protected parking.

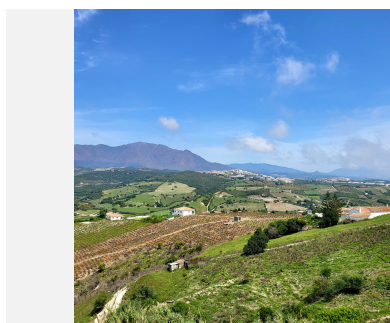
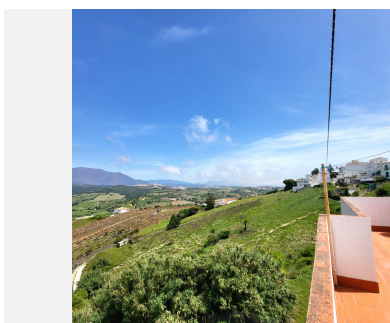
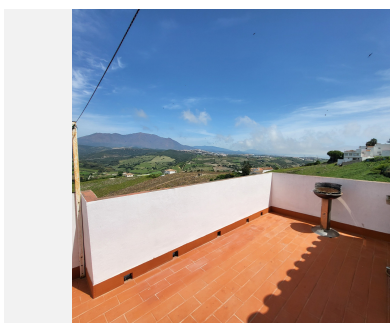
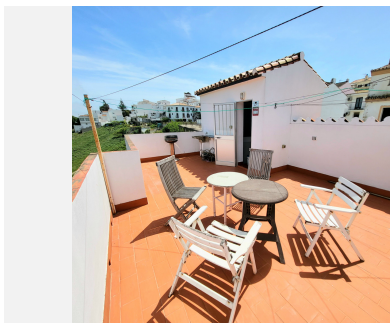
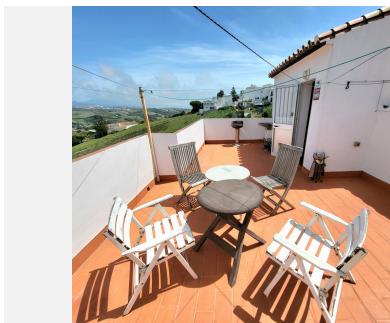
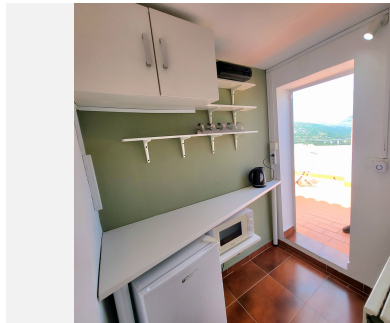
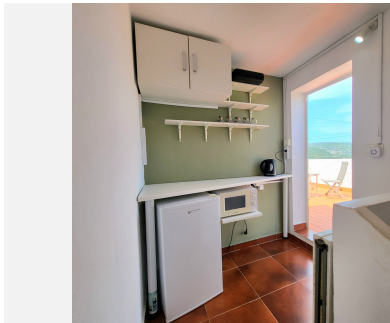
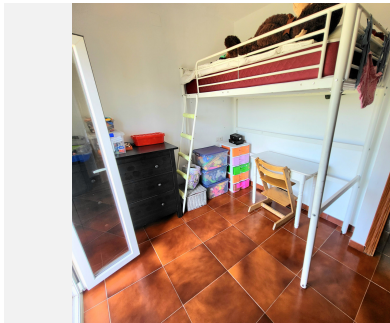
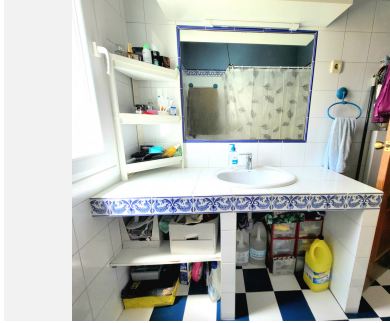
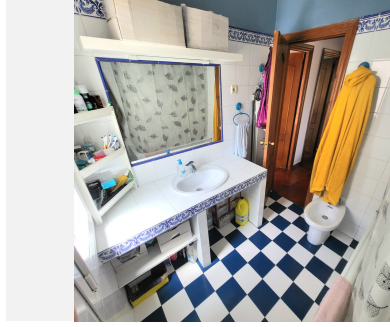
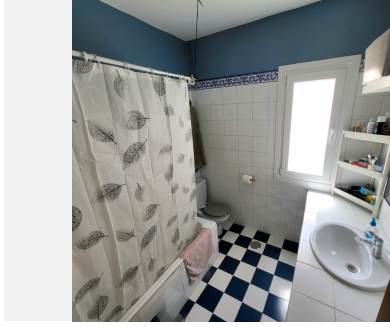
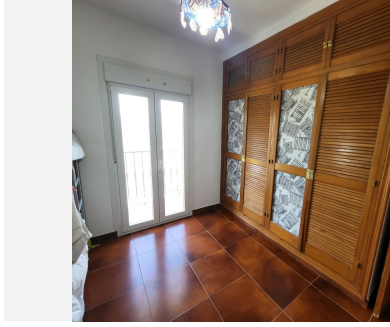
Its excellent location allows easy walking access to all essential services: shops, schools, public transport, and the town center. It is also just a short drive from Sabinillas beach and La Duquesa marina.

In summary, this is an ideal home for those seeking tranquility, nature, and quality of life without giving up proximity to the leisure and lifestyle of the Costa del Sol.



BROMLEY ESTATES

Marbella



BROMLEY ESTATES

Marbella

