

BROMLEY ESTATES

Marbella



MIDDLE FLOOR APARTMENT 3 BEDROOMS 2.5 BATHROOMS IN ESTEPONA

📍 Estepona

REF# R5366644 €575,000

BEDS

3

BATHS

2.5

BUILT

118 m²

TERRACE

48 m²

Azata Delmare is a modern luxury residential development located in the Casares Costa, right on the border with Estepona (and within 20 minutes leisurely walk to the beach). Views towards the Sierra Bermeja mountain range from the back of the property, and frontal sea views from the living area.

This modern contemporary (brand new and never lived in) 3 bedroom, 2.5 bathroom middle floor apartment offers the perfect blend of both beach, golf and mountain facilities within a few minutes.

As you enter the property you have a hallway with wardrobe and ample storage space (entry phone) and guest loo.

The open plan kitchen and dining room has lots of natural light and has access to the south facing terrace with sea views. The ultra modern kitchen includes Siemens appliances (dishwasher, washing machine, oven and induction hob, fridge & freezer) included with touch panel doors and sleek central island with

+34 952 939 460 · info@bromleyestatesmarbella.com Urbanizacion El Rosario, CN340, Km 188, Marbella, Malaga 29603

BROMLEY ESTATES

Marbella.

seating area.

The living area has wide terrace doors allowing lots of natural light to flood the room, which open on the large terrace area with sea views.

As we enter back through the property we have a separate hallway which can be closed off from the separate living area. Here you also have a luxurious stone shower room and double sink.

The master suite, is spacious and has plenty of wardrobe storage with access to a private terrace with views of the gardens. Also ensuite with large modern walk in shower and double sink. Window for natural light .

The 2nd double bedroom (currently twin beds), lovely open view from the terrace. The 3rd double bedroom also shares the terrace, with mountain and garden views.

The property has underground parking and very large storage room.

SOLD FULLY FURNISHED

There is a community infinity pool with views towards the beach and sea (south facing aspect), showers and dedicated toilet facilities for residents. Within this communal garden area will be ?a ?community ?space ?(currently being ?discussed as a ?restaurant or ?social ?club ?for ?residents).

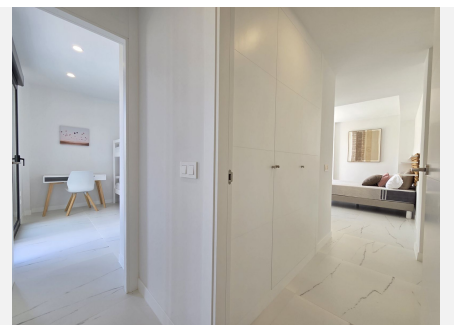
Also a gymnasium which will be ?fully ?equipped and ?solely ?for ?residents ?use.

VIDEO ?AVAILABLE ?ON ?REQUEST



BROMLEY ESTATES

Marbella



BROMLEY ESTATES

Marbella



BROMLEY ESTATES

Marbella

