



PENTHOUSE DUPLEX 3 BEDROOMS 2 BATHROOMS IN BENALMADENA COSTA

📍 Benalmadena Costa

REF# R5368999 €465,000

BEDS

3

BATHS

2

BUILT

125 m²

TERRACE

25 m²

Newly renovated, turnkey ready, with three terraces and a master suite all to itself.

This 3-bedroom, 2-bathroom duplex is the kind of property you walk into and don't have to imagine it's already done. 125m² of fully renovated living space, on Cl Alemania in the heart of Benalmádena, with mountain views, a private parking space, and a storage room included.

The main floor flows beautifully: entrance hall, a modernised kitchen, and a generous living-dining room that opens straight onto a sunny terrace. Two double bedrooms (one with terrace access), both with fitted wardrobes. Newly reformed family bathroom. Air conditioning throughout. Secure controlled-access building.

Upstairs is the standout. The whole top floor is given over to the master suite a large bedroom, en-suite bathroom with a full-sized bath, and direct access to a private terrace. Step outside and you've also got a generous second terrace with mountain views, perfect for BBQs and long evenings outdoors.

+34 952 939 460 · info@bromleyestatesmarbella.com Urbanizacion El Rosario, CN340, Km 188, Marbella, Malaga 29603

BROMLEY ESTATES

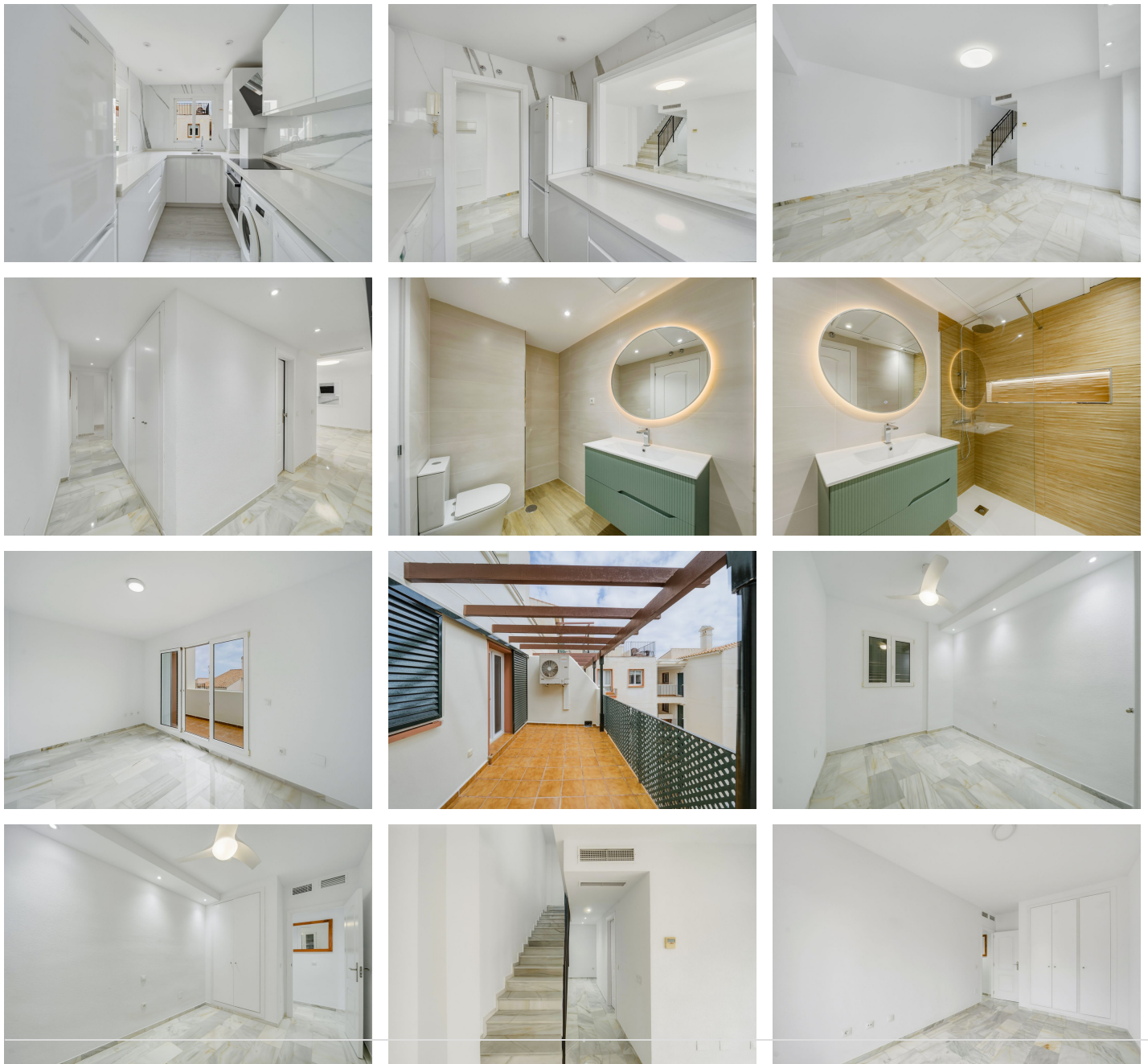
Marbella

You're walking distance from the beach, supermarkets, bars, cafés, the medical centre, and the international golf schools. On the main bus routes too.

A move-in-ready family home or a strong holiday rental investment in one of Benalmádena's best-connected pockets.

This stunning property also comes with parking and storage.

Speak to us about a viewing this week.



+34 952 939 460 · info@bromleyestatesmarbella.com Urbanizacion El Rosario, CN340, Km 188, Marbella, Malaga 29603

BROMLEY ESTATES

Marbella

