



PENTHOUSE 3 BEDROOMS 2 BATHROOMS IN BENALMADENA PUEBLO

📍 Benalmadena Pueblo

REF# R5370205 €1,135,000

BEDS

3

BATHS

2

BUILT

155 m²

TERRACE

53 m²

This exceptional three-bedroom duplex penthouse in Stupa Hills is more than a home—it's a sanctuary designed for a balanced and wellness-driven lifestyle. From the moment you enter, the sea welcomes you, opening up to breathtaking views that instantly create a sense of calm and serenity.

Set in one of the most privileged phases of the development, the property offers uninterrupted panoramic views of the Mediterranean, allowing natural light and a soothing atmosphere to flow throughout the home.

Located near the charming Benalmádena Pueblo and surrounded by scenic hiking routes, it's ideal for those who value outdoor living, fresh air, and an active, mindful lifestyle. Whether it's a morning walk in nature or unwinding at sunset, every day here encourages you to slow down and reconnect.

Inside, the home blends contemporary elegance with comfort. The open-plan living area extends seamlessly onto a spacious terrace—perfect for al fresco dining, relaxation, or simply enjoying the peaceful

BROMLEY ESTATES

Marbella

surroundings.

On the upper level, the master bedroom has direct access to a private terrace, creating a quiet and intimate space to start or end the day while taking in the calming sea views.

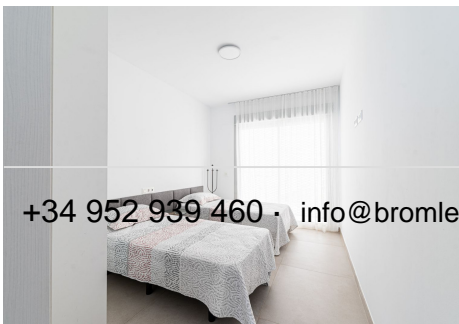
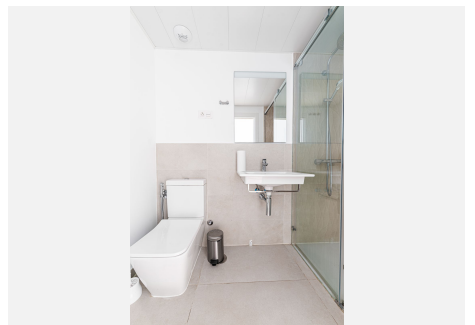
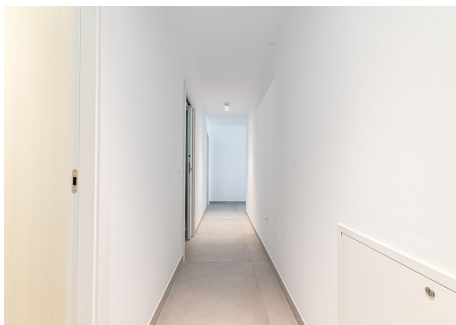
Every element has been thoughtfully designed to support wellbeing and ease, including a water purification system, underfloor heating, automated features, and sun protection film on the windows, helping to maintain a comfortable indoor temperature while preserving the natural light.

The community at Stupa Hills elevates the wellness experience even further, with a state-of-the-art Technogym-equipped gym, dedicated Pilates rooms with classes available, and a luxurious spa featuring a sauna and traditional Turkish bath. Two outdoor pools provide additional space for relaxation, exercise, and enjoying the Mediterranean lifestyle year-round.

Despite its tranquil setting, the property is conveniently located within walking distance of shops and restaurants, with excellent connections to Málaga Airport and the A-7.

This penthouse offers a rare opportunity to embrace a lifestyle centered on wellbeing, natural beauty, and modern comfort on the Costa del Sol.

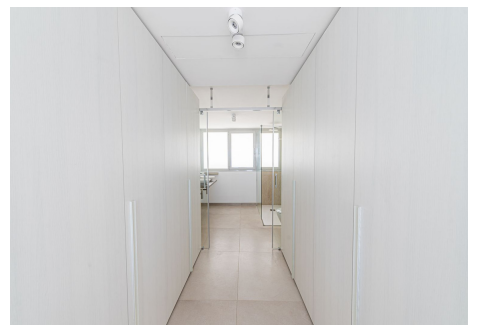
Please contact us for more information or to arrange a private viewing.



+34 952 939 460 - info@bromleyestatesmarbella.com - Urbanizacion El Rosario, CN370, Km 188, Marbella, Malaga 29603

BROMLEY ESTATES

Marbella



BROMLEY ESTATES

Marbella

