



TOWNHOUSE 5 BEDROOMS 2.5 BATHROOMS IN SAN PEDRO DE ALCANTARA

📍 San Pedro de Alcantara

REF# R5371933 €850,000

BEDS

5

BATHS

2.5

BUILT

203 m²

PLOT

50 m²

TERRACE

56 m²

Ideal Townhouse in the Heart of San Pedro – Comfort, Location, and Lifestyle

Discover the perfect combination of comfort, location, and quality of life with this magnificent townhouse situated in the very center of San Pedro. Just a few minutes' walk from the urban center, you will have access to a wide range of restaurants, shops, supermarkets, and services, all within reach without the need for a car.

This move-in-ready property stands out for its modern, welcoming, and luminous atmosphere. Spread over three floors, it offers five spacious bedrooms, one of them en suite, as well as an additional full bathroom and a guest toilet, making it an ideal option for families seeking both space and functionality.

The home features a fully equipped, generously sized kitchen, with the possibility of easily integrating it with the living room to create an elegant open-plan concept, perfect for today's lifestyle.

+34 952 939 460 · info@bromleyestatesmarbella.com Urbanizacion El Rosario, CN340, Km 188, Marbella, Malaga 29603

BROMLEY ESTATES

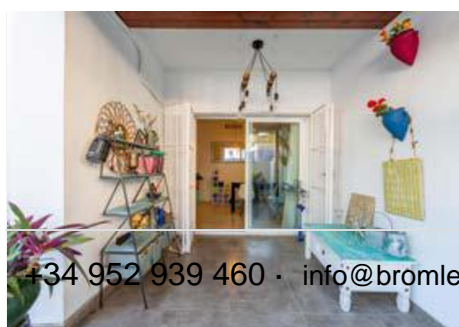
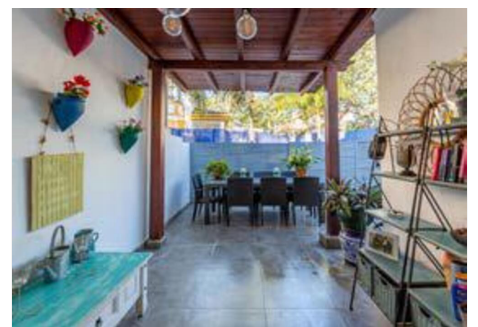
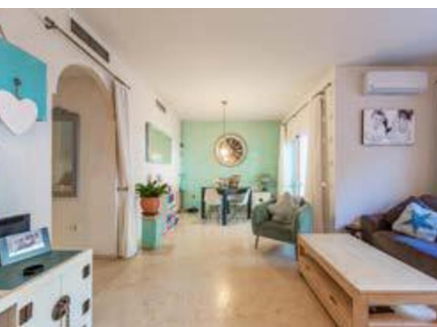
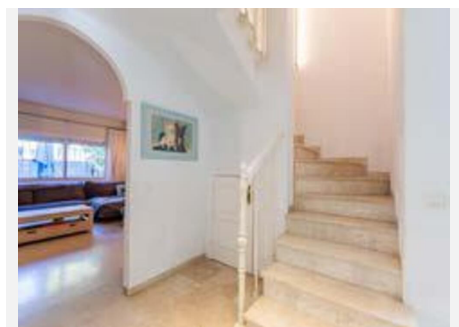
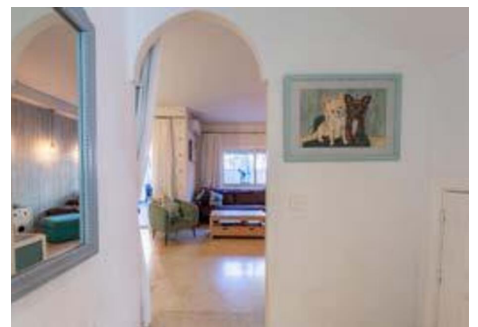
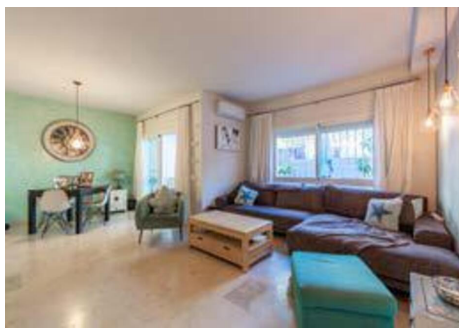
Marbella

Outdoors, you will enjoy various open-air spaces, including a pleasant rear terrace and a private rooftop terrace with sea views—ideal for relaxing or entertaining friends and family.

Additional features include:

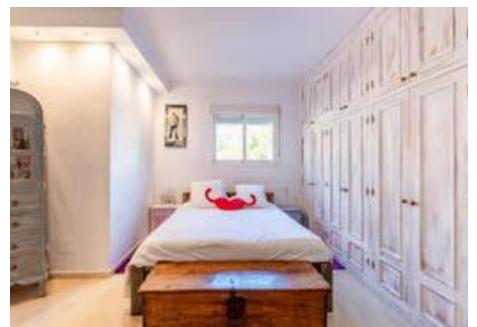
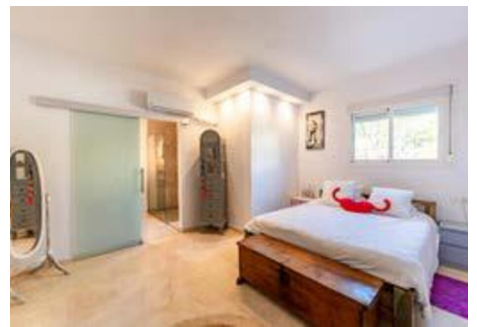
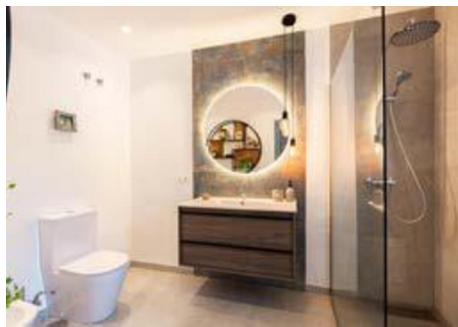
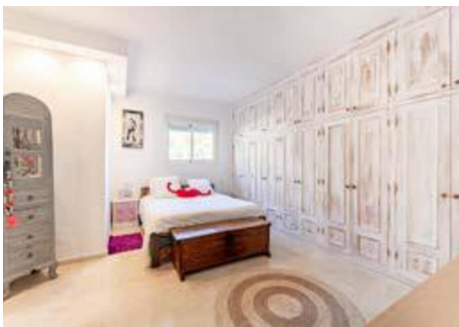
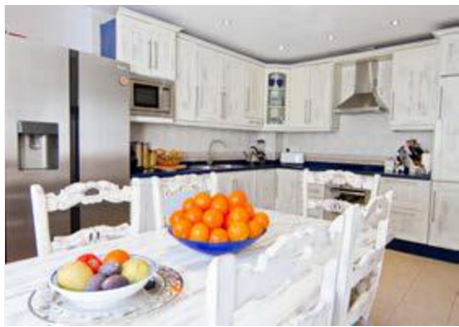
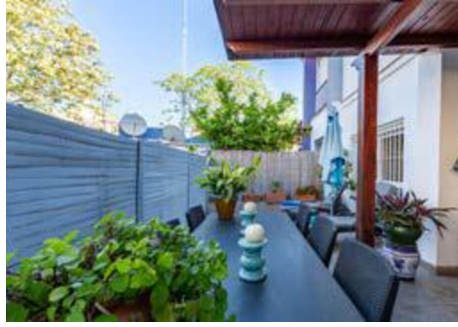
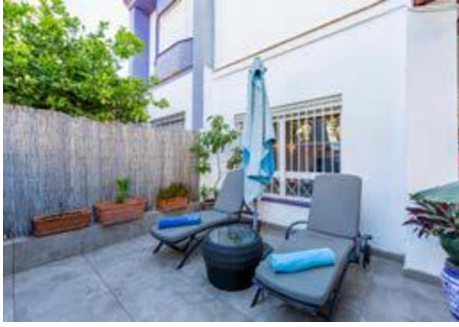
- ? Private parking within the property
- ? Additional space for a second vehicle
- ? Access to a peaceful communal swimming pool

An excellent opportunity to acquire a charming home in one of the most sought-after areas of the Costa del Sol.



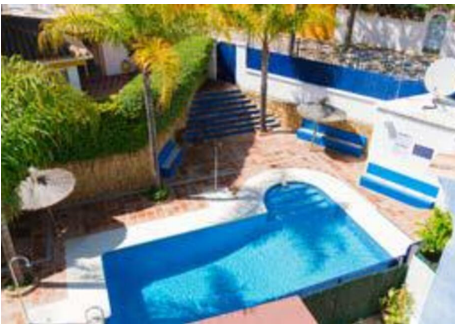
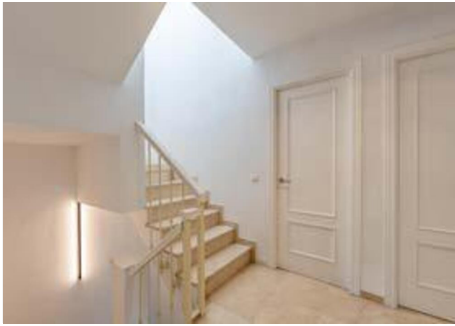
BROMLEY ESTATES

Marbella



BROMLEY ESTATES

Marbella



BROMLEY ESTATES

Marbella

