



PENTHOUSE 1 BEDROOM 1 BATHROOM IN MANILVA

📍 Manilva

REF# R5374111 €179,600

BEDS

1

BATHS

1

BUILT

48 m²

TERRACE

30 m²

PENTHOUSE WITH LARGE TERRACE AND PANORAMIC VIEWS OF MANILVA

Discover this welcoming penthouse located in a quiet residential area of Manilva, ideal for those seeking a move-in ready property or an excellent investment on the Costa del Sol. The apartment has been recently renovated and stands out for its functional layout, abundant natural light, and a fantastic private terrace of approximately 30 m², perfect for creating a chill-out area, outdoor dining space, or relaxation area with open views of the mountains and the surrounding town.

The property features one bedroom and one bathroom, distributed across a constructed area of 48 m². Thanks to its southeast-southwest orientation, it enjoys abundant natural light throughout much of the day, as well as pleasant panoramic views. The living room connects to the terrace, visually expanding the space and creating a pleasant sense of continuity between indoors and outdoors.

The fully renovated and equipped kitchen offers a practical and modern design, ideal for everyday living. The property also features air conditioning, an elevator, an intercom system, and is offered with optional

+34 952 939 460 · info@bromleyestatesmarbella.com Urbanizacion El Rosario, CN340, Km 188, Marbella, Malaga 29603

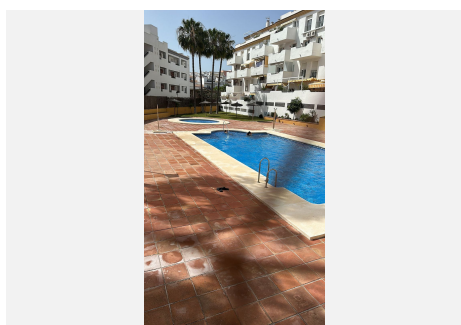
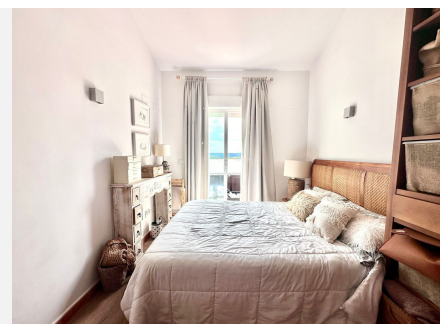
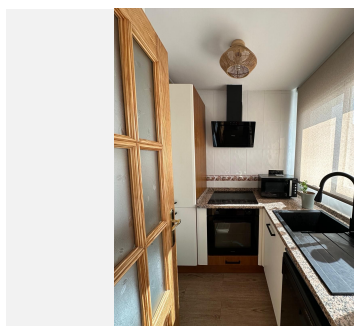
BROMLEY ESTATES

Marbella

furniture, allowing for easy adaptation to the buyer's needs.

Located within a gated community with a swimming pool and communal gardens, this property combines privacy and comfort. A parking space within the building is also available for rent at €50/month, a highly valued extra in the area.

Its location is another of its major attractions. Situated in the town of Manilva, it offers an authentic Andalusian atmosphere, with supermarkets, restaurants, cafes, and essential services just minutes away. The beaches of Sabinillas and La Duquesa are approximately a 5-minute drive away, while the La Duquesa Marina is about 10 minutes away, ideal for enjoying its gastronomic and leisure offerings. Sotogrande is about 15 minutes away, Estepona town center about 20 minutes, and Gibraltar approximately 30 minutes, providing excellent connections for both permanent residence and holiday getaways.



BROMLEY ESTATES

Marbella

