

BROMLEY ESTATES

Marbella



PENTHOUSE APARTMENT 1 BEDROOM 1 BATHROOM IN MANILVA

📍 Manilva

REF# R5378632 €215,000

BEDS

1

BATHS

1

BUILT

52 m²

TERRACE

8 m²

Lovely, andalucian style top-floor apartment with amazing sea views up to Gibraltar!

Area of Manilva in Hacienda Gualdalupe and close to the port of La Duquesa.

The 2nd floor apartment offers a spacious living room outgoing to the 8 sqm terrace, facing south with all day sun.

Stunning views to sea and overlooking the surroundings.

Distributed in salon, bedrooms with 1 bathroom, open plan kitchen fully fitted and furnished.

Including all furnitures.

Parking in the gated community area in front of the units.

Features: ceramic flooring, double glazing windows, security entrance door, open fire place, sun blinds, fitted wardrobe, furnished, fitted kitchen, terrace.

Gated 24-hours security urbanisation with community gardens and swimming pool.

In 5 minutes walking distance to the beaches.

5 minutes drive to the port of La Duquesa or 10 minutes drive to Estepona or to the other side of the coast,

+34 952 939 460 · info@bromleyestatesmarbella.com Urbanizacion El Rosario, CN340, Km 188, Marbella, Malaga 29603

BROMLEY ESTATES

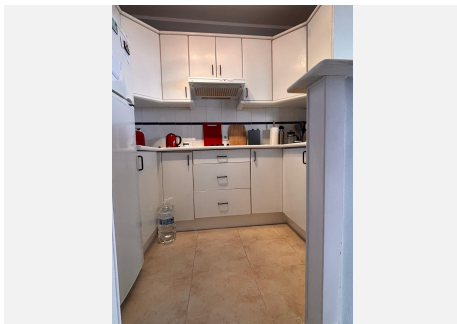
Marbella.

to Sotogrande port.

Surrounded by several golf courses, like La Duquesa Golf and many others.

Low community fees of monthly 40€.

70% mortgage of purchase price is offered from Spanish banks if required.



BROMLEY ESTATES

Marbella

