



MIDDLE FLOOR APARTMENT 3 BEDROOMS 2 BATHROOMS IN BENALMADENA

📍 Benalmadena

REF# R5381017 €739,000

BEDS

3

BATHS

2

BUILT

130 m²

TERRACE

31 m²

Located in the prestigious Stupa Hills development, this exceptional property combines contemporary design, spacious interiors, privacy and breathtaking panoramic views of the Mediterranean Sea and the iconic Benalmádena Stupa. A unique setting to enjoy tranquility, nature and the very best of Costa del Sol living.

This apartment stands out for offering a larger layout than the standard properties within the development, featuring an impressive and exceptionally bright living area with direct access to a spectacular corner terrace. From here, you can enjoy uninterrupted sea views and complete privacy, as the surroundings are fully consolidated with no future construction planned in front of the property.

The home offers three spacious bedrooms and two bathrooms, including a master en-suite. The main bedroom features a stunning open-concept bathtub with sea views, creating an elegant spa-like atmosphere within the home.

+34 952 939 460 · info@bromleyestatesmarbella.com Urbanizacion El Rosario, CN340, Km 188, Marbella, Malaga 29603

BROMLEY ESTATES

Marbella.

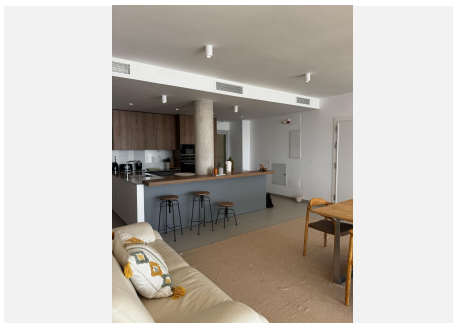
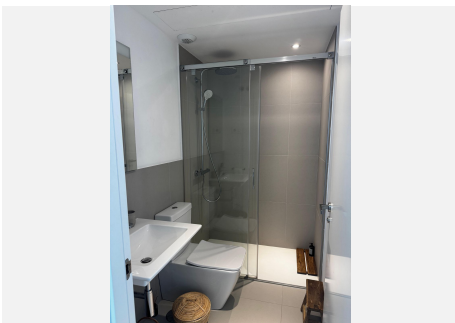
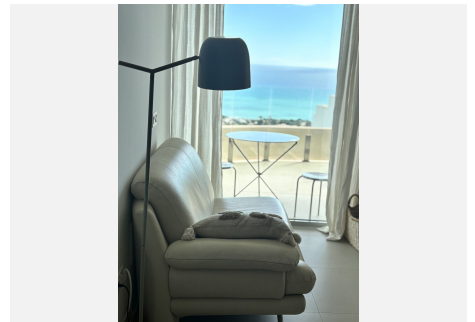
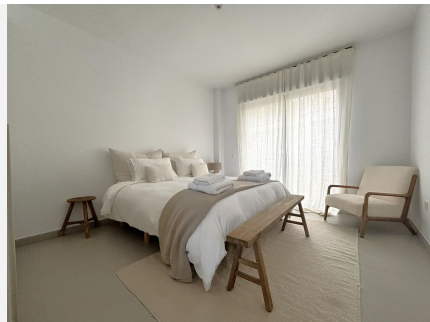
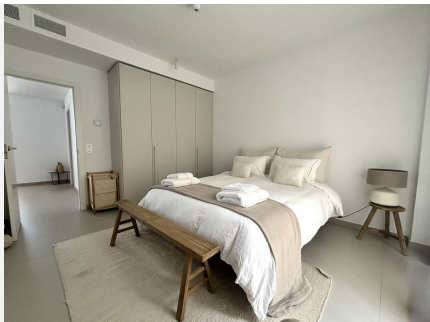
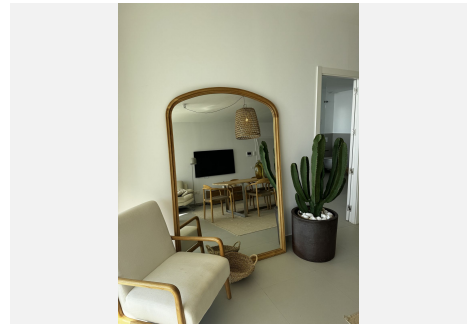
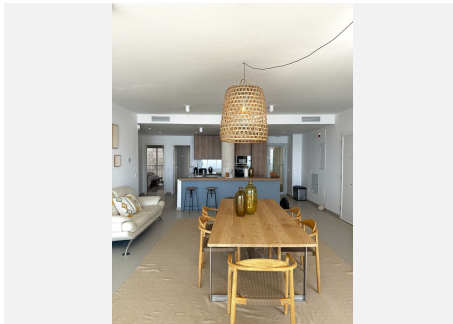
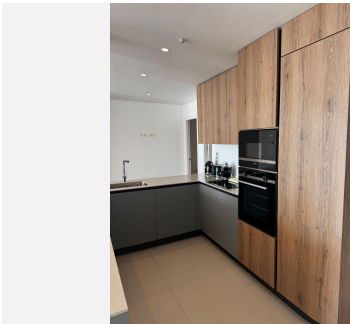
Designed for maximum comfort all year round, the property benefits from underfloor heating throughout and is sold furnished, excluding personal belongings, allowing the new owners to move in immediately.

The property also includes two private parking spaces and a large storage room.

Stupa Hills is one of the most exclusive residential communities in Benalmádena, offering outstanding facilities including two outdoor swimming pools, a fully equipped gym, spa area with sauna and hammam, and beautifully maintained gardens.

Ideally located in a peaceful natural setting, the property is just minutes away from renowned international schools, sports facilities, supermarkets and the famous Benalmádena Butterfly Park, while the beach can be reached within a 10-minute drive.

A unique opportunity for buyers seeking privacy, spacious living, sea views and exclusivity in one of the Costa del Sol's most desirable locations.



BROMLEY ESTATES

Marbella

