



SEMI-DETACHED HOUSE 3 BEDROOMS 2 BATHROOMS IN BENALMADENA

📍 Benalmadena

REF# R5381995 €800,000

BEDS

3

BATHS

2

BUILT

202 m²

PLOT

313 m²

TERRACE

15 m²

A rare gem in the heart of the Costa del Sol, this beautifully maintained villa combines panoramic sea views, versatile living spaces, and modernised details with exceptional potential. Located in the sought-after Benalmádena area, just 20 minutes from Málaga Airport and 5 minutes from the beach, the property offers easy access to shops, restaurants, banks, schools, and golf courses — making it ideal both as a permanent residence and as an investment.

Key Features

- Three levels including a versatile basement
- 4 bedrooms and 3 bathrooms, with recently reformed bathrooms
- Plot size: 313 m² Built area: 217 m²
- Air conditioning throughout
- Stunning sea views from multiple levels
- Private entrance with electric gates
- Parking for 1 car inside + 1–2 exterior spaces

+34 952 939 460 · info@bromleyestatesmarbella.com Urbanizacion El Rosario, CN340, Km 188, Marbella, Malaga 29603

BROMLEY ESTATES

Marbella.

- First occupancy licence Debt-free property
- Fully equipped kitchen, internet installation, intercom, and alarm system

Interior Layout

- Ground floor: 2 bedrooms and 1 bathroom (one currently used as an office, easily convertible).
- First floor: Large master suite with walk-in closet and bathroom, direct access to a sun-drenched terrace with breathtaking views.
- Basement: Spacious lounge, small kitchen, games room with snooker table, additional bedroom and bathroom, professional recording studio, laundry room, and potential to add 1–2 more bedrooms with minimal investment. Direct access to patio and pool area.

Outdoor Living

- Private swimming pool with sea views
- BBQ and patio area for entertaining
- Large terraces across multiple levels
- Access to gated community amenities including swimming pool, gardens, bathroom, shower, and tennis court directly in front of the property

Location Benefits

- 20 minutes to Málaga Airport
- 5 minutes to Benalmádena beaches
- 30 minutes to Marbella and Puerto Banús
- Walking distance to shops, restaurants, markets, and bus stop
- Close to private English schools and multiple golf courses

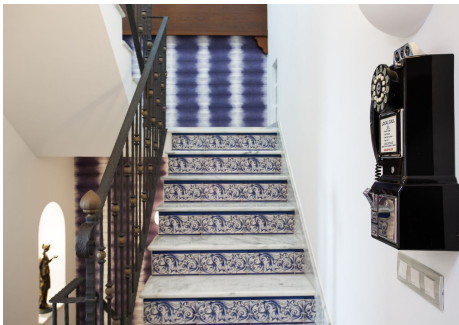
Ideal For

- Families who want a safe, spacious home with private pool, terraces, and proximity to schools and services
- Retirees seeking tranquility, panoramic views, and easy access to healthcare and leisure
- Investors looking for strong rental yield and long-term appreciation in one of the Costa del Sol's most desirable enclaves
- Creatives and musicians, thanks to the in-house professional recording studio and versatile basement spaces
- Sports and beach enthusiasts, with golf courses, tennis courts, and Mediterranean beaches just minutes away

This villa is a rare opportunity to own a versatile, sea-view property in one of the Costa del Sol's most desirable enclaves. Whether you're seeking a permanent residence, a holiday home, or a high-return investment, this home delivers elegance, lifestyle, and potential.

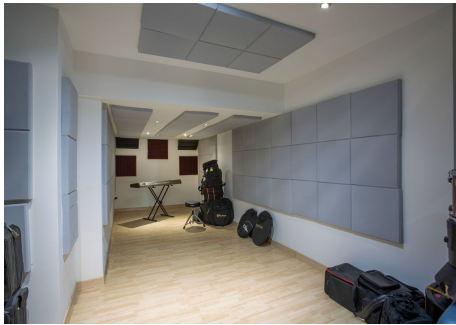
BROMLEY ESTATES

Marbella



BROMLEY ESTATES

Marbella



BROMLEY ESTATES

Marbella

