

BROMLEY ESTATES

Marbella



PENTHOUSE DUPLEX 3 BEDROOMS 2 BATHROOMS IN DOÑA JULIA

📍 Doña Julia

REF# R5383912 €720,000

BEDS

3

BATHS

2

BUILT

168 m²

TERRACE

120 m²

Exclusive Penthouse with 180° Panoramic Sea Views & Private 120 m² Solarium – Doña Julia Golf

An extraordinary penthouse for those who truly appreciate breathtaking views.

This exceptional property offers 180-degree panoramic views over the Mediterranean Sea, with Gibraltar and the coast of Morocco visible on clear days. The apartment spans from one side of the building to the other (pass-through design), ensuring abundant natural light in every room.

Key Features

288 m² built

3 bedrooms

2 bathrooms

Multiple terraces with east, south and west orientations for sun all day long

+34 952 939 460 · info@bromleyestatesmarbella.com Urbanizacion El Rosario, CN340, Km 188, Marbella, Malaga 29603

BROMLEY ESTATES

Marbella

Beautiful sunset terrace with mountain views

Private 120 m² roof solarium with jacuzzi and spectacular 360° views

Built in 2017

Air conditioning

Fitted wardrobes

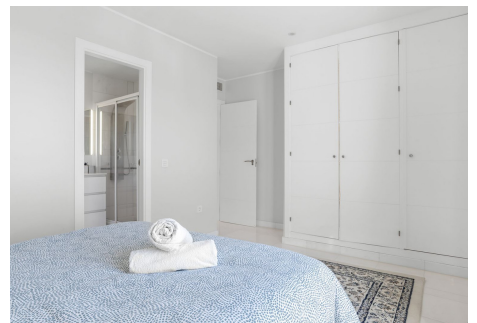
Private garage space + large storage room in basement

2nd floor exterior with lift

Adapted access for reduced mobility

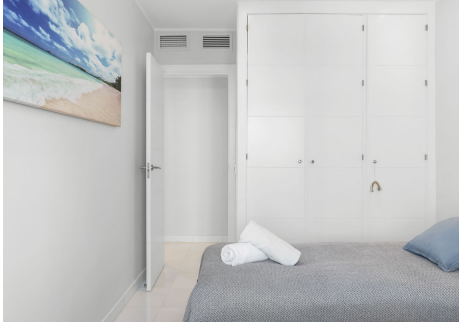
The penthouse combines elegance, space and an unbeatable location within the prestigious Doña Julia Golf resort. Perfect for those seeking a unique lifestyle surrounded by golf, nature and the sea.

Viewing highly recommended – this is a truly special property.



BROMLEY ESTATES

Marbella



BROMLEY ESTATES

Marbella

