

BROMLEY ESTATES

Marbella



HOUSE 4 BEDROOMS 4 BATHROOMS IN SIERREZUELA

📍 Sierrezuela

REF# R5384209 €1,390,000

BEDS

4

BATHS

4

BUILT

606 m²

PLOT

1000 m²

****Single-family house for sale****

We present this magnificent single-family house with 564 m² of built area, a spacious and versatile property ideal for families seeking comfort and room to breathe. Distributed across 4 bedrooms and 4 bathrooms, this home offers the space needed for each family member to enjoy their own privacy.

Built in 2006 and maintained in excellent condition, the property combines structural solidity with modern comfort. It has exposure in all directions, allowing excellent natural light throughout the day. Built-in wardrobes maximize storage, while the additional storage room provides extra space for belongings.

The house features a large terrace and balcony, perfect spaces for enjoying the outdoors, relaxing, or sharing moments with family and friends. The climate control system, with a heat pump, ensures a pleasant temperature in both winter and summer, providing comfort all year round.

+34 952 939 460 · info@bromleyestatesmarbella.com Urbanizacion El Rosario, CN340, Km 188, Marbella, Malaga 29603

BROMLEY ESTATES

Marbella

The property includes a parking space, making access and secure parking more convenient. Its good state of preservation makes it a solid investment, ready to be occupied without the need for major renovations.

Nearby, there are various services and points of interest. Within about 8–15 minutes on foot, you can access quality educational centers for children. Around 10–18 minutes' walk away, you will find healthcare centers and pharmacies. The area also offers local shops, supermarkets, and convenience stores within 5–12 minutes on foot. In addition, there are public transport options, restaurants, and cafés nearby, creating a complete and well-connected environment.

This house represents an exceptional opportunity for those looking for a spacious, well-located home in perfect condition. Do not hesitate to contact us to arrange a viewing.



+34 952 939 460 - info@bromleyestatesmarbella.com Urbanización El Rosario, CN340, Km 188, Marbella, Malaga 29603

BROMLEY ESTATES

Marbella



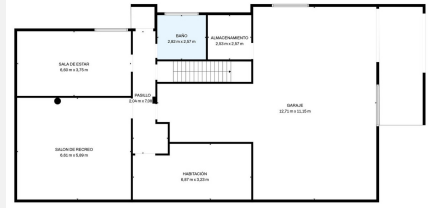
BROMLEY ESTATES

Marbella

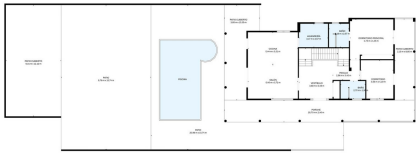


BROMLEY ESTATES

Marbella



TOTAL: 323 m²
 Planta Baja: 112 m², 1^o piso: 208 m², 2^o piso: 85 m², 3^o piso: 0 m²
 ÁREAS EXCLUIDAS: GARAJE: 92 m², ALMACENAMIENTO: 6 m², PATIO CUBIERTO: 121 m²,
 PASO: 12 m², PORCHE: 49 m², MUROS: 0 m²,
 BALCÓN: 122 m², TERRAZA: 53 m², MUROS: 38 m²



TOTAL: 323 m²
 Planta Baja: 112 m², 1^o piso: 208 m², 2^o piso: 85 m², 3^o piso: 0 m²
 ÁREAS EXCLUIDAS: GARAJE: 92 m², ALMACENAMIENTO: 6 m², PATIO CUBIERTO: 121 m²,
 PASO: 12 m², PORCHE: 49 m², MUROS: 0 m²,
 BALCÓN: 122 m², TERRAZA: 53 m², MUROS: 38 m²



TOTAL: 323 m²
 Planta Baja: 112 m², 1^o piso: 208 m², 2^o piso: 85 m², 3^o piso: 0 m²
 ÁREAS EXCLUIDAS: GARAJE: 92 m², ALMACENAMIENTO: 6 m², PATIO CUBIERTO: 121 m²,
 PASO: 12 m², PORCHE: 49 m², MUROS: 0 m²,
 BALCÓN: 122 m², TERRAZA: 53 m², MUROS: 38 m²



TOTAL: 323 m²
 Planta Baja: 112 m², 1^o piso: 208 m², 2^o piso: 85 m², 3^o piso: 0 m²
 ÁREAS EXCLUIDAS: GARAJE: 92 m², ALMACENAMIENTO: 6 m², PATIO CUBIERTO: 121 m²,
 PASO: 12 m², PORCHE: 49 m², MUROS: 0 m²,
 BALCÓN: 122 m², TERRAZA: 53 m², MUROS: 38 m²



TOTAL: 323 m²
 Planta Baja: 112 m², 1^o piso: 208 m², 2^o piso: 85 m², 3^o piso: 0 m²
 ÁREAS EXCLUIDAS: GARAJE: 92 m², ALMACENAMIENTO: 6 m², PATIO CUBIERTO: 121 m²,
 PASO: 12 m², PORCHE: 49 m², MUROS: 0 m²,
 BALCÓN: 122 m², TERRAZA: 53 m², MUROS: 38 m²