



SEMI-DETACHED HOUSE 3 BEDROOMS 3.5 BATHROOMS IN MANILVA

📍 Manilva

REF# R5386771 €652,800

BEDS

3

BATHS

3.5

BUILT

384 m²

PLOT

213 m²

This is an exclusive development of 12 semi-detached homes located in one of the most promising areas of the Costa del Sol. This unique residential project combines contemporary design, spacious living, and privacy in a privileged setting between the sea and nature.

Each home has been carefully designed to offer maximum comfort and brightness, with a total built area of 384.71 m² on plots of 213 m². The interior layout stands out for its large open-plan spaces, expansive windows, and architecture conceived to seamlessly connect indoor living areas with terraces and outdoor spaces.

The properties feature 3 en-suite bedrooms, including one bedroom on the ground floor, all with integrated walk-in wardrobes and direct access to private terraces through large windows that enhance natural light and open views. In addition, each home includes an elegant guest toilet for the convenience of residents and visitors.

BROMLEY ESTATES

Marbella.

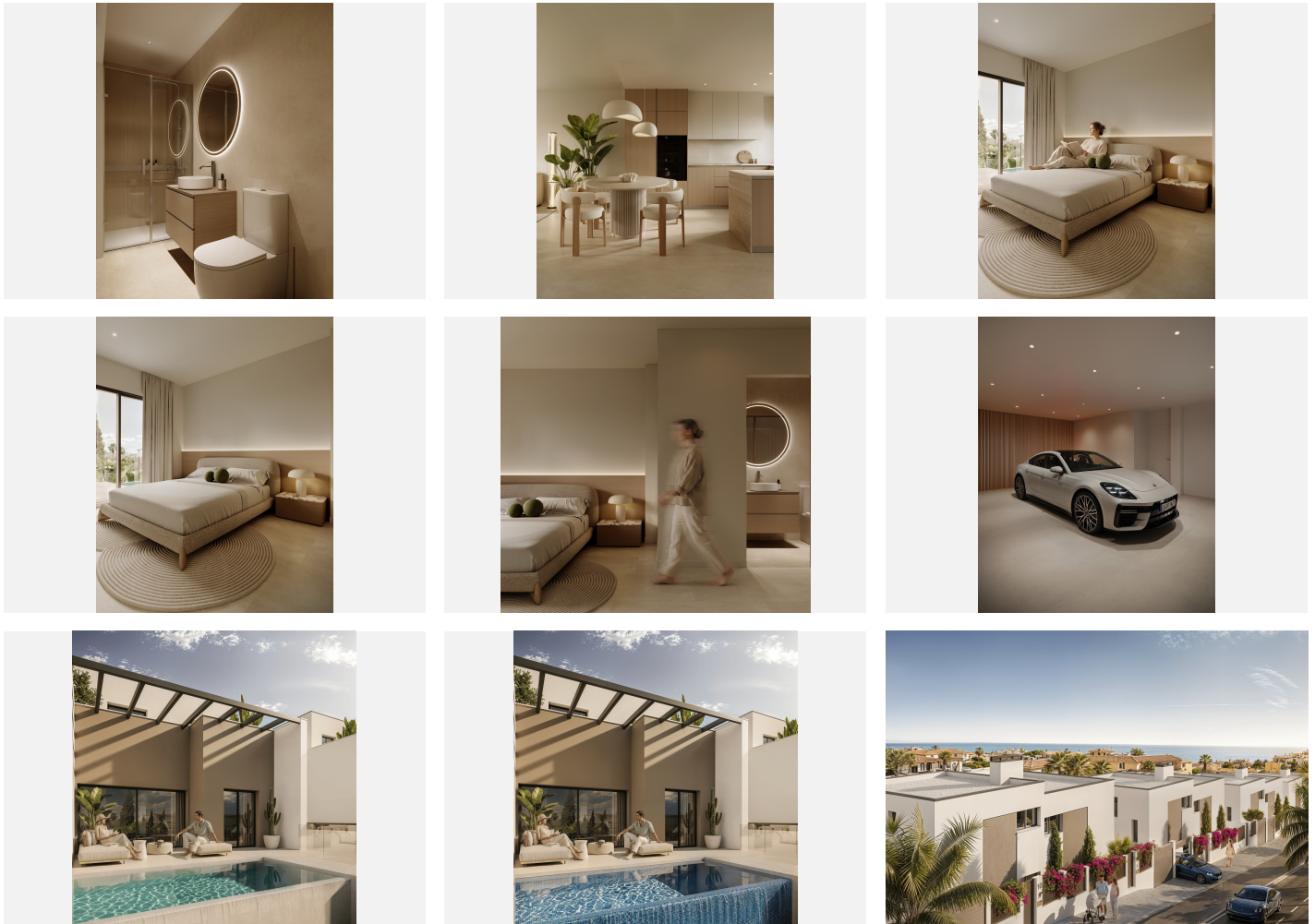
The kitchen is delivered fully furnished and equipped, integrated into a modern and functional concept ideal for family living and entertaining guests.

Outside, each property boasts an elegant private infinity-style swimming pool, creating an exclusive space to enjoy the Mediterranean climate all year round.

Furthermore, the homes include a spacious 91.12 m² basement and an English courtyard, designed to provide even more natural light and ventilation to the lower-level rooms. The project also offers dual access to each property from both streets, providing comfort, privacy, and functionality.

The development has been conceived for those seeking quality of life, design, and exclusivity, just a few minutes from Sotogrande, golf courses, beaches, and all the amenities of the Costa del Sol.

THIS OFFER IS SUBJECT TO POSSIBLE ERRORS, OMISSIONS, PRICE CHANGES, OR ANY OTHER MODIFICATIONS WITHOUT PRIOR NOTICE



BROMLEY ESTATES

Marbella

