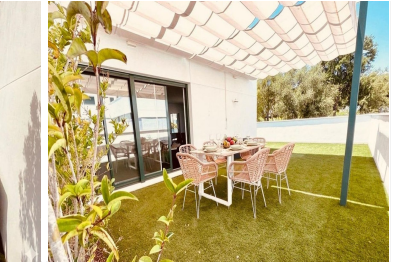


BROMLEY ESTATES

Marbella



MIDDLE FLOOR APARTMENT 5 BEDROOMS 6 BATHROOMS IN SOTOGRANDE

📍 Sotogrande

REF# R5388769 €985,000

BEDS

5

BATHS

6

BUILT

200 m²

TERRACE

179 m²

Spacious Designer Apartment with Exceptional Terrace in La Reserva, Sotogrande

Set within the prestigious Senda Chica community in La Reserva, this exceptional first-floor apartment offers a very different approach to modern living. While many new developments focus on minimalism, this home stands out with personality, warmth and carefully curated interior design. With a total built area of 379 m², including an impressive 179 m² wraparound terrace, the apartment offers the feeling of a villa while enjoying the convenience and security of apartment living.

A bright entrance hall leads into a spacious open-plan living and dining area, designed for both everyday living and entertaining. Floor-to-ceiling windows maximise natural light and create a seamless connection between indoor and outdoor spaces.

+34 952 939 460 · info@bromleyestatesmarbella.com Urbanizacion El Rosario, CN340, Km 188, Marbella, Malaga 29603

The apartment has been finished with a distinctive style, featuring vibrant colour palettes, botanical details and high-quality furnishings, creating a warm and sophisticated atmosphere rarely found in contemporary properties.

Features include:

- Approx. 200 m² interior living space
- Total built area of 379 m²
- 179 m² U-shaped terrace surrounding the property
- Floor-to-ceiling windows throughout
- Electrically controlled blinds in all rooms
- Fully equipped modern kitchen
- 4 en-suite bedrooms with fitted wardrobes
- Additional home office with private bathroom
- Separate laundry room
- High-speed fibre internet up to 1000 Mbps
- Climate control throughout the property with integrated hot and cold air conditioning, complemented by ceramic heating system
- 2 underground parking spaces
- Tourist licence in place, offering excellent flexibility for holiday rentals when the property is not in personal use

The property offers four spacious en-suite bedrooms, each with fitted wardrobes and private bathrooms, ensuring privacy and comfort for family and guests.

An additional smaller room with a private bathroom is currently used as a home office, ideal for remote working or creating a private workspace.

The standout feature is the impressive wraparound terrace. Covered with artificial grass and including a retractable sunroof area, it creates multiple outdoor living spaces where nature can be enjoyed from almost every room of the home.

A further advantage is the existing tourist licence, giving the property strong rental potential and added flexibility for buyers who want to combine private use with short-term holiday rental income.

Community Amenities

Living in Senda Chica offers more than just a beautiful apartment. Residents enjoy:

- Gated community with security
- 25-metre outdoor swimming pool
- Children's pool
- Two modern padel courts
- Gym
- Landscaped communal areas
- Underground parking throughout the community

BROMLEY ESTATES

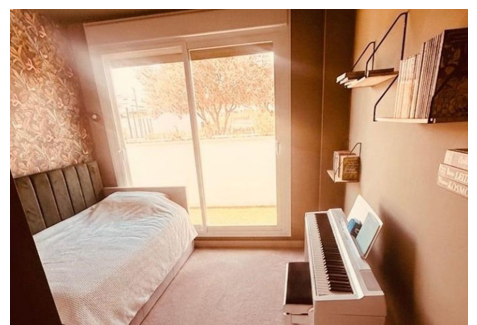
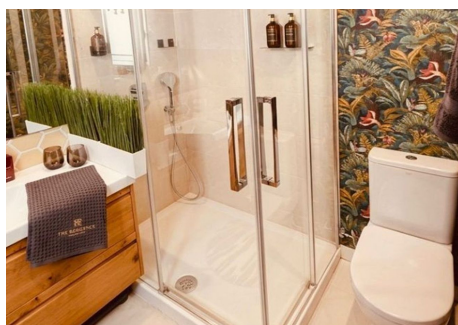
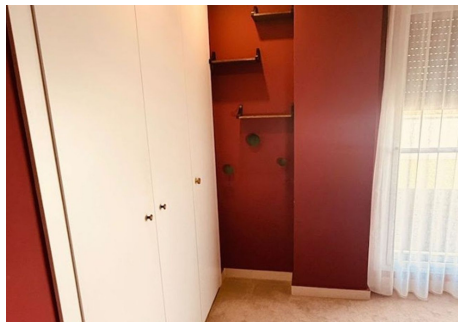
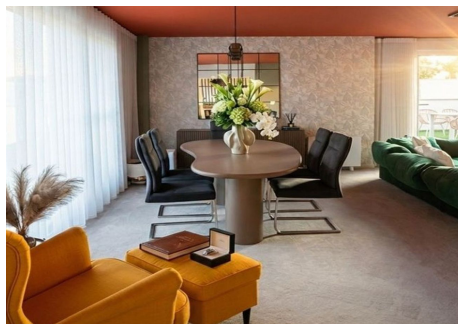
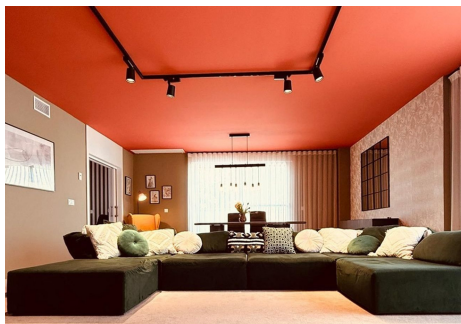
Marbella.

- Safe traffic-free areas ideal for children and pets

Located within La Reserva, Sotogrande, Senda Chica enjoys a peaceful and private setting surrounded by nature while remaining close to world-class golf courses, Sotogrande Marina, international schools, beach clubs and everyday amenities.

This is a property for buyers looking for something beyond a standard apartment: a home with character, exceptional space, strong rental flexibility and complete tranquillity in one of Sotogrande's most sought-after locations.

Viewing is highly recommended to fully appreciate the design, proportions and unique atmosphere of this exceptional property.



BROMLEY ESTATES

Marbella

