



TOWNHOUSE 2 BEDROOMS 2 BATHROOMS IN ALHAURIN DE LA TORRE

📍 Alhaurin de la Torre

REF# R5390287 €419,000

BEDS

2

BATHS

2

BUILT

176 m²

Perfectly positioned beside the first hole at Lauro Golf, this elegant south-facing semi-detached villa offers a lifestyle that blends nature, sport, and Mediterranean ease—just 20 minutes from Málaga Airport and within easy reach of the coast.

Designed across three levels, the home combines bright contemporary interiors with effortless indoor-outdoor living.

The main floor is the social heart of the home, where a spacious open-plan living and dining area with fireplace flows seamlessly into a fully equipped kitchen. Large doors open onto a private terrace and garden—ideal for long outdoor lunches, sunset drinks, or simply enjoying the year-round Andalusian sunshine.

BROMLEY ESTATES

Marbella.

Upstairs, two generous bedrooms provide peaceful private accommodation, including a principal suite with en-suite bathroom. Both rooms feature fitted wardrobes and enjoy a calm, elevated outlook.

Crowning the home is the charming turret level—a versatile open space that can serve as a third bedroom, guest retreat, home office, or creative studio—opening onto its own private terrace with spectacular 360° views across the golf course, mountains, and surrounding countryside.

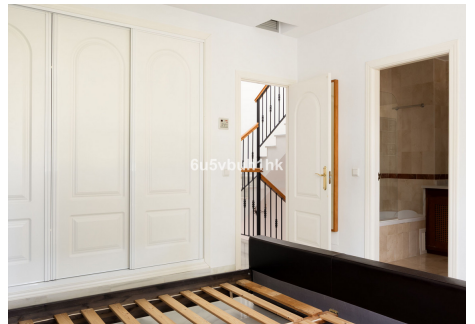
The property also includes a private garage space and storage room.

A Lifestyle Beyond the Front Door

Life at Lauro Golf is about far more than the home itself. Residents enjoy access to an established resort-style community with:

- Multiple communal swimming pools
- Paddle tennis courts
- Clubhouse and restaurant
- Equestrian facilities
- 27-hole championship golf course
- Peaceful landscaped surroundings

Set between Alhaurín de la Torre and Alhaurín el Grande, this sought-after enclave offers the rare balance of privacy, nature, and accessibility—perfect for full-time living, a lock-up-and-leave holiday home, or an investment in the Costa del Sol lifestyle.



BROMLEY ESTATES

Marbella

