

BROMLEY ESTATES

Marbella



MIDDLE FLOOR APARTMENT 3 BEDROOMS 2 BATHROOMS IN ESTEPONA

📍 Estepona

REF# R5393347 €499,000

BEDS

3

BATHS

2

BUILT

107 m²

Contemporary apartment in the latest phase of Puerto Blanco with panoramic Mediterranean and Gibraltar views

Sixth-floor contemporary apartment with panoramic sea views, southwest orientation, private terrace, community pool and garage in Estepona Port.

Introducing a contemporary apartment in the latest phase of Puerto Blanco, ideally positioned in the heart of Estepona Port. Located on the 6th floor, this home boasts impressive panoramic views across the Mediterranean coastline and towards Gibraltar.

The property comprises 3 bedrooms and 2 bathrooms, including a master en-suite with bathtub and a second bathroom with shower. The fully equipped kitchen is complemented by a separate laundry room, while the interior layout is bright and welcoming, designed to maximise natural light throughout.

With its desirable southwest orientation, the apartment enjoys abundant afternoon and evening sunshine—best appreciated from the private terrace, an ideal spot to unwind while taking in the exceptional

+34 952 939 460 · info@bromleyestatesmarbella.com Urbanizacion El Rosario, CN340, Km 188, Marbella, Malaga 29603

BROMLEY ESTATES

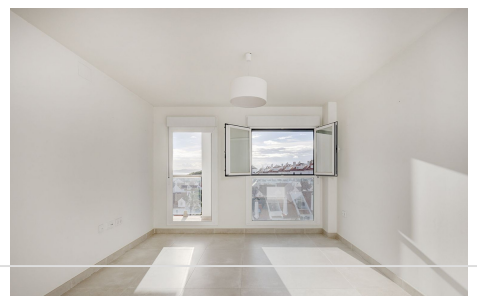
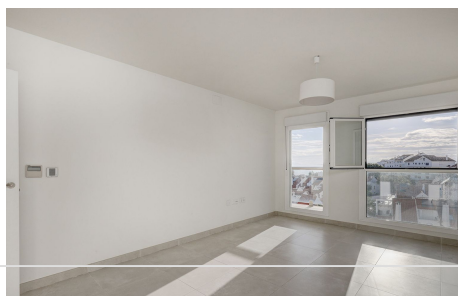
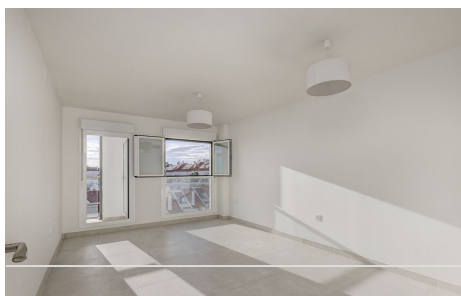
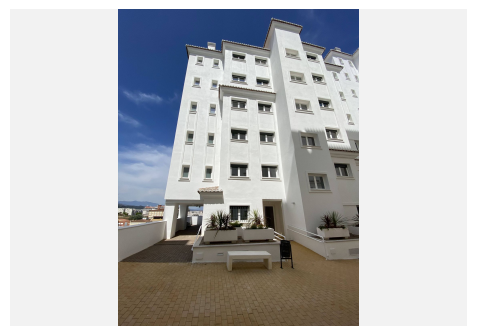
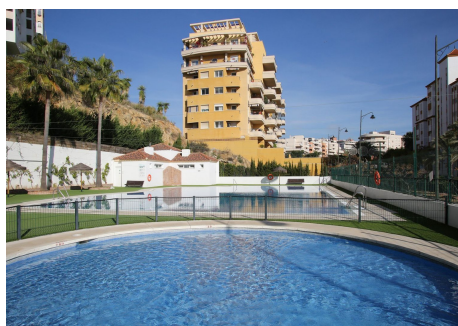
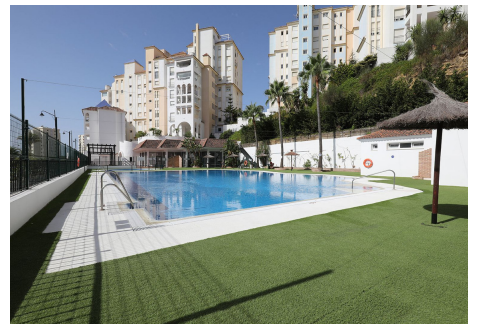
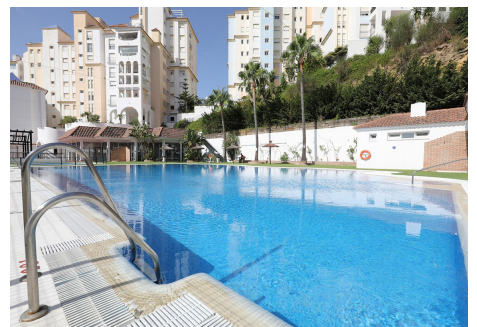
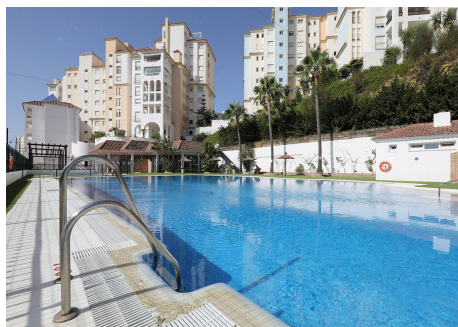
Marbella

sea views.

Residents of this modern development have access to a large community swimming pool, offering a relaxing environment just moments from the port's beaches, restaurants, cafés, sports clubs and local amenities.

A private garage space is included, completing an excellent opportunity to acquire a modern residence in one of Estepona's most sought-after portside locations.

Located in the heart of Estepona Port, just moments from beaches, cafés, restaurants, sports clubs and essential local amenities.



BROMLEY ESTATES

Marbella



BROMLEY ESTATES

Marbella



BROMLEY ESTATES

Marbella

