

BROMLEY ESTATES

Marbella



HOUSE 5 BEDROOMS 5 BATHROOMS IN MANILVA

📍 Manilva

REF# R5395921 €1,100,000

BEDS

5

BATHS

5

BUILT

359 m²

PLOT

1213 m²

TERRACE

104 m²

An exceptional residential opportunity awaits in an established coastal enclave known for its tranquil and sophisticated environment. This location offers seamless connectivity to pristine coastlines and exclusive maritime ports, allowing residents to easily walk to world-class yacht marinas and fine sandy beaches. The setting provides a practical foundation for daily living, combining privacy with proximity to premium leisure amenities such as renowned international golf courses, beach clubs, and exceptional dining options.

Designed as a distinguished single-family residence, the property reflects an excellent standard of modern construction and space utilization. Set across a convenient two-level layout, the home greets visitors through an organized entrance leading to a primary living environment. The first level encompasses a spacious lounge, a fully equipped kitchen, a practical utility area, and a guest toilet. This upper floor also hosts two comfortable bedrooms, including a private master suite with an integrated dressing area and ensuite facilities. Throughout the year, comfort is maintained via a complete air conditioning system, complemented by a traditional fireplace in the main living area for cozy evenings.

Descending to the lower level reveals a self-contained layout that functions perfectly as a private guest apartment. This independent floor features a central distributor hall, three well-proportioned bedrooms, and three private bathrooms, ensuring complete autonomy and comfort for visiting family or guests. Additionally,

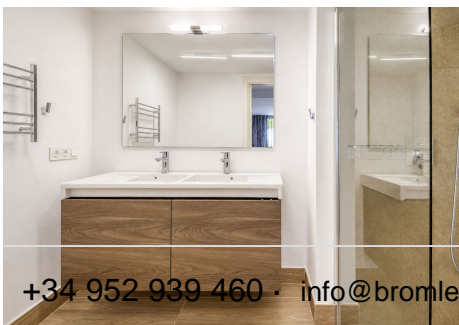
+34 952 939 460 · info@bromleyestatesmarbella.com Urbanización El Rosario, CN340, Km 188, Marbella, Malaga 29603

BROMLEY ESTATES

Marbella

this lower tier includes a secondary lounge and an indoor cooking and barbecue area designed for relaxed social gatherings.

The exterior of the estate is defined by beautifully maintained, lush gardens that wrap around the property, creating a tranquil natural boundary. Outdoor living centers around a private swimming pool positioned to take advantage of the favorable local climate and sunlight. For added convenience, the estate includes a secure garage as well as an auxiliary technical structure that houses the pool machinery and provides dedicated storage. From elevated positions across the grounds and terraces, residents can enjoy panoramic views of the sea, as well as distinct sights stretching toward Gibraltar, completing a well-rounded and comfortable residential experience.



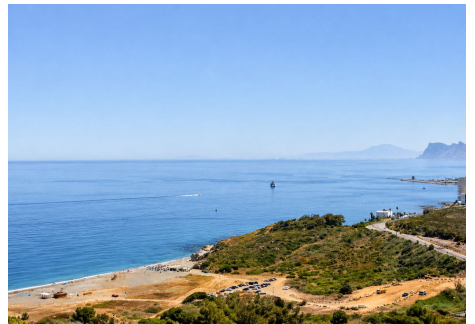
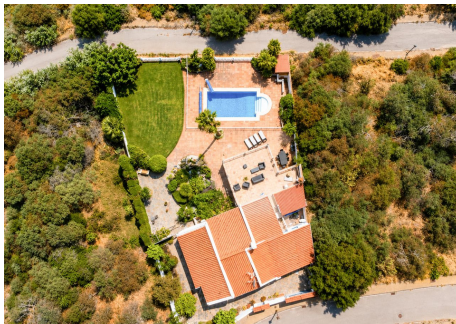
BROMLEY ESTATES

Marbella



BROMLEY ESTATES

Marbella



BROMLEY ESTATES

Marbella

