

# BROMLEY ESTATES

*Marbella*



## PENTHOUSE APARTMENT 2 BEDROOMS 1 BATHROOM IN LA DUQUESA

📍 La Duquesa

REF# R5397709 €335,000

BEDS

2

BATHS

1

BUILT

73 m<sup>2</sup>

PLOT

91 m<sup>2</sup>

TERRACE

18 m<sup>2</sup>

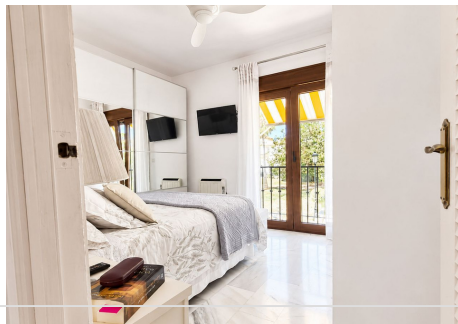
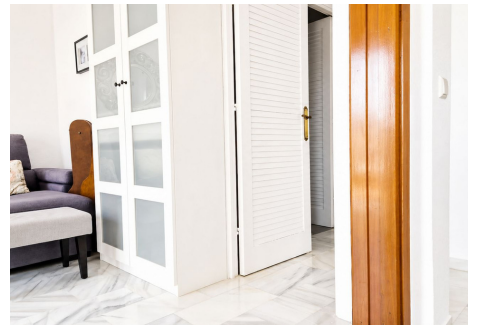
Set within a stunning beachside community, this exceptional location offers the perfect blend of tranquillity, beauty, and Mediterranean charm. Surrounded by beautifully maintained gardens and traditional Andalusian architecture, the community embraces the timeless appeal of the famous whitewashed houses that define southern Spain. Just a short stroll from the marina, and an even shorter walk to the golden sandy beach, everything you could wish for is right on your doorstep. Enjoy an abundance of nearby bars, cafés, restaurants, and authentic chiringuitos (beach bars), where long lunches and sunset dining become part of everyday life. Peaceful, secure, and impeccably kept, this is a true slice of paradise where the relaxed coastal lifestyle meets convenience and sophistication. With its unbeatable surroundings and enviable atmosphere, the location is simply hard to beat, offering some of the very best of the Mediterranean right here. This top floor apartment has a brilliant layout, a beautifully designed and very well curated space, benefitting from plenty of natural light. The entrance hallway sweeps you straight into a big, bright open-plan living area. The kitchen is sleek and well placed against the back wall. This space flows into the dining area and lounge area with a working fireplace. From the dining area, a full wall of glass doors opens onto the

+34 952 939 460 · info@bromleyestatesmarbella.com Urbanizacion El Rosario, CN340, Km 188, Marbella, Malaga 29603

# BROMLEY ESTATES

*Marbella*

south-facing terrace. The doors fully retract, seamlessly blending the indoor and outdoor spaces to create the perfect setting for year round living and entertaining. The bedrooms and bathroom can be found down a separate hallway to the right. The master bedroom benefits from a bright juliet balcony, catching the afternoon sun. The room itself has been very thoughtfully designed and benefits from plenty of storage space, including built in wardrobes. The second bedroom adjoins with the south facing terrace, with its own sliding door opening straight onto the terrace, perfect for morning coffees. This room is currently being used as an additional living area and is easily adaptable to become a full time bedroom. They both share a fresh, modern bathroom which has been recently renovated, including a walk in rain shower and high specification bathroom fixtures. Step out from the living room onto the extended, sun drenched, southeast-facing terrace that acts as your own private oasis. Positioned perfectly to catch the early morning light, it's the ultimate spot to sit with a coffee and watch a beautiful sunrise lift over the horizon. Equally the terrace is equipped with a full awning and curtains, very well designed to create plenty of shade when needed. The elevated viewpoint offers a picturesque outlook, looking right over clusters of classic, whitewashed beach houses down below, with a lovely slice of the blue sea. With plenty of room for the large dining table currently in place, and additional space to sit back and enjoy the sunshine, this beautiful space captures that laid-back, coastal atmosphere perfectly. translate to spanish



# BROMLEY ESTATES

*Marbella*

