



## MIDDLE FLOOR APARTMENT 2 BEDROOMS 2 BATHROOMS IN RIVIERA DEL SOL

📍 Riviera del Sol

REF# R5407687 €277,000

BEDS

2

BATHS

2

BUILT

95 m<sup>2</sup>

TERRACE

15 m<sup>2</sup>

Short-Term Rentals Allowed | Spacious 2-Bedroom Apartment with Sea Views

This bright and spacious fifth-floor apartment offers an excellent opportunity for both permanent living and investment, with short-term rentals permitted and beautiful sea views from its private terrace.

The property features two generously sized bedrooms, one bathroom, and a guest toilet. The master bedroom enjoys direct access to the balcony, while the spacious open-plan living and dining area is filled with natural light and also opens onto the terrace, creating the perfect space to relax and enjoy the views.

The separate fully fitted kitchen is practical and complete with a washing machine and dishwasher.

Although comfortable and perfectly functional as it is, the apartment would benefit from some TLC, offering buyers the chance to add value and personalise the space to their own taste.

# BROMLEY ESTATES

*Marbella.*

Additional features include a private underground parking space and a storage room.

The well-maintained community offers beautifully landscaped gardens and a communal swimming pool, with a second pool currently under construction. Residents can enjoy these facilities throughout the year. Despite the property's convenient access to the motorway, its position within the development ensures there is no motorway noise.

Ideally located, the apartment is just a 4-minute walk from the nearest bus stop, approximately 15 minutes on foot to the golf club, less than 5 minutes by car to shops, restaurants and everyday amenities, and only a 6-minute drive to the beach.

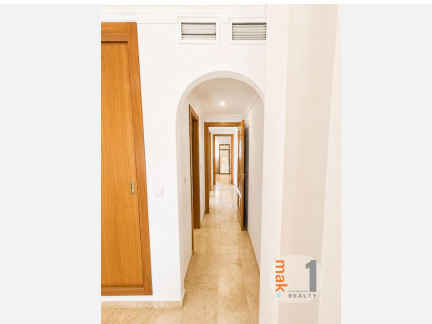
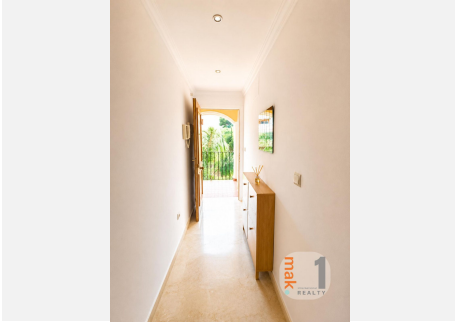
Water consumption is included in the community fees, while rubbish collection is included in the annual IBI tax.

A spacious property with great potential, excellent community facilities, and a convenient location on the Costa del Sol.



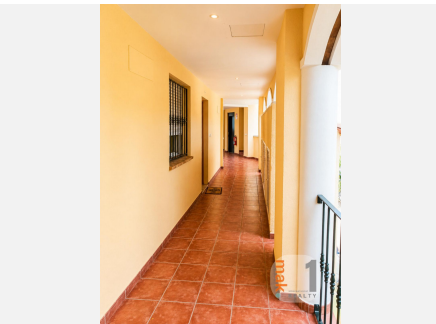
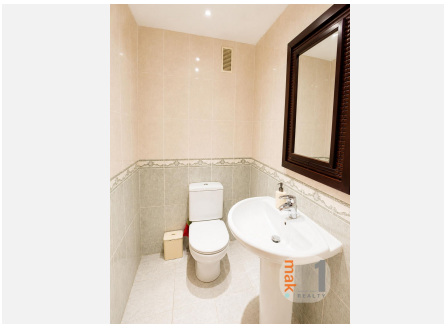
# BROMLEY ESTATES

## *Marbella*



# BROMLEY ESTATES

## *Marbella*



# BROMLEY ESTATES

*Marbella*

