

BROMLEY ESTATES

Marbella.



MIDDLE FLOOR APARTMENT 3 BEDROOMS 2 BATHROOMS IN NUEVA ANDALUCIA

📍 Nueva Andalucia

REF# R5413564 €1,349,000

BEDS

3

BATHS

2

BUILT

162 m²

TERRACE

39 m²

Located within the award-winning and prestigious gated community of Aldea Blanca, this stunning new renovated 3-bedroom residence offers a rare blend of timeless Mediterranean charm and flawless Scandinavian engineering. Rebuilt from the inside out with a relentless focus on technical perfection, this property represents a unique opportunity to acquire a turnkey luxury home where you can truly leave the car behind.

Aldea Blanca (The White Village) is not merely a residential development; it is a celebrated piece of Marbella's history. Designed by the legendary architect Melvin Villarroel—the mastermind behind the iconic Puente Romano and Marbella Club—it was built to resemble a traditional Andalusian village. Today, it remains one of the most sought-after addresses in the Golf Valley, famous for its 24-hour security, four magnificent pool areas, and world-class tropical gardens.

PROPERTY HIGHLIGHTS & DESIGN FEATURES

+34 952 939 460 · info@bromleyestatesmarbella.com Urbanizacion El Rosario, CN340, Km 188, Marbella, Malaga 29603

BROMLEY ESTATES

Marbella

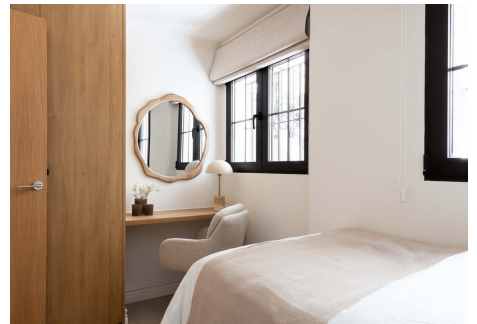
- Scandinavian Quality & Engineering: Every inch of this property is brand new. Built for longevity and comfort, it features a completely new electrical system, new plumbing throughout, custom-made aluminum double-glazed windows, and a ventilation system that guarantees a healthy indoor climate year-round—a rare luxury in the Mediterranean.
- Ultimate Climate Control (Airzone): Experience precision comfort with a AC and heating system powered by Airzone. This allows for independent, automated temperature control in every room, ensuring maximum efficiency and personal comfort.
- Bespoke Italian Kitchen: The heart of the home features a premium integrated kitchen by Maistri (sourced from Vicco in Sweden), seamlessly fitted with top-tier Miele appliances. It is as functional for everyday use as it is sophisticated for entertaining.
- Seamless Indoor-Outdoor Flow: The light-filled, open-plan living and dining area is optimized for social living, comfortably accommodating up to 6 guests. Elegant Georgian-style aluminum sliding doors lead directly out to 2 generous terraces, oriented to the south-west for maximum sun exposure. One of the standout features is the main terrace, complete with an equipped outdoor kitchen.
- Elegant Accommodations: The apartment offers three beautifully appointed bedrooms with custom carpentry and natural design elements. The master suite features its own luxurious en-suite bathroom.
- Prime "Walk-To-Everything" Location: Enjoy total convenience with the glamour of Puerto Banús, the beach, Centro Plaza, and its vibrant Saturday market all within short walking distance. Elite golf courses (Las Brisas, Los Naranjos, Aloha) and international schools are just minutes away.

THE SPECIFICATIONS

- Interior: Open-plan social layout with premium materials and bespoke furnishings.
- Bedrooms / Bathrooms: 3 Bedrooms / 2 Bathrooms (Master en-suite).
- Outdoor Space: 2 Large Terraces with custom outdoor kitchen & BBQ zone.
- Built-in bookcase with ethanol fireplace.
- Underfloor heating ?bathrooms ?
- ?Sonos ?sound system ?
- Orientation: South-West ?(Sun all ?afternoon).
- ?Investment ?Potential: ?Sold fully furnished and key-ready. High ?premium ?rental demand
- ?Short ?rentals ?? ?days ?or ?more ?allowed.

BROMLEY ESTATES

Marbella



BROMLEY ESTATES

Marbella

