



## SEMI-DETACHED HOUSE 4 BEDROOMS 4 BATHROOMS IN NUEVA ANDALUCIA

📍 Nueva Andalucia

REF# R5417878 €1,595,000

BEDS

4

BATHS

4

BUILT

263 m<sup>2</sup>

PLOT

556 m<sup>2</sup>

TERRACE

48 m<sup>2</sup>

Villa-Style Semi-Detached Home with Heated Pool, Sunny Garden and Sea Views in Nueva Andalucía

- ? Villa feeling
- ? 4 bedrooms – with ensuite bathrooms
- ? Heated private pool (3.7 x 8 m)
- ? Panoramic and sea views
- ? 4 spacious floors with flexible living spaces
- ? Private garden with fruit trees
- ? Patio for outdoor dining with a BBQ area for year-round use
- ? Double garage with automatic doors
- ? Excellent sun orientation throughout the day
- ? Prime Nueva Andalucía location close to schools, golf and Puerto Banús

# BROMLEY ESTATES

*Marbella*

---

Welcome to this exceptional home in Nueva Andalucía, offering the space, privacy and lifestyle of a villa. Distributed over four levels, the property combines generous indoor living areas with easily connected outdoor spaces, making it ideal as a family home or holiday residence.

The well-maintained landscaped garden features Mediterranean fruit trees and flowers, a heated private swimming pool measuring 3.7 x 8 metres, a sun deck and room for a trampoline. The garden and pool area are illuminated at night, creating a wonderful atmosphere for Mediterranean evenings.

Directly connected to the kitchen is a BBQ area and a covered terrace designed for all-year-round use. Here you will find a dining area with automatic wind screens/sun shades, ceiling heaters and a fan, enjoyable throughout the year.

The entrance level offers a bright open-plan layout with a kitchen, dining area and living room. Large sliding doors create a seamless connection to the terrace, lounge area and pool garden below. A guest WC is also located on this floor.

The basement level features high ceilings, a spacious lounge with a cinema-room feel, one en-suite bedroom, a large bathroom and a practical laundry area with an additional fridge and freezer. This floor is perfect as a large guest suite, teenage retreat or accommodation for a live-in nanny.

On the first floor, two en-suite bedrooms provide privacy and comfort. The master suite enjoys its own private terrace with panoramic views towards the Mediterranean Sea, generous wardrobe space and room for a home office.

The top floor consists of an impressive loft-style suite with an en-suite bathroom. Large enough to accommodate a king-size bed, sofa area and workspace, this versatile floor can serve as a luxurious guest suite.

Located close to international schools, golf courses, restaurants and Puerto Banús, this is a rare home that truly combines villa living with convenience and flexibility.

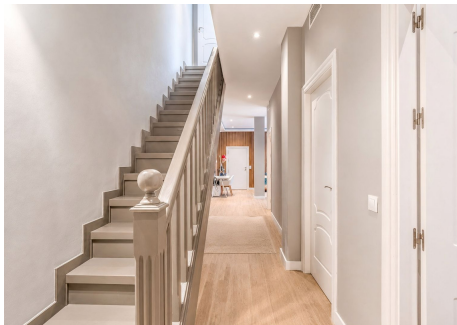
# BROMLEY ESTATES

## *Marbella*



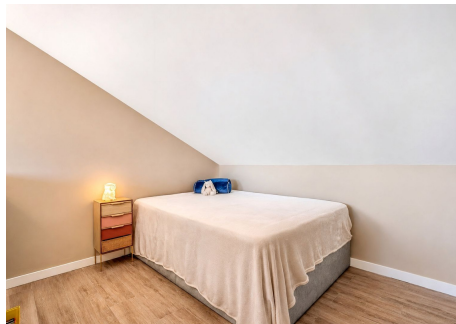
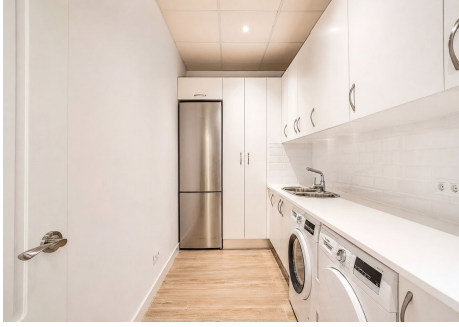
# BROMLEY ESTATES

*Marbella*



# BROMLEY ESTATES

## *Marbella*



# BROMLEY ESTATES

*Marbella*

