



GROUND FLOOR APARTMENT 2 BEDROOMS 2 BATHROOMS IN ESTEPONA

📍 Estepona

REF# R5419342 €619,000

BEDS

2

BATHS

2

BUILT

167 m²

TERRACE

77 m²

Exclusive Beachfront Apartment with Panoramic Sea Views in Estepona

This exceptional property is located within the prestigious Sinfonía del Mar residential community in the sought-after area of Buenas Noches, Estepona — directly on the Mediterranean coastline with immediate access to the beach. A rare opportunity to own a frontline beach apartment with uninterrupted panoramic sea views in one of the Costa del Sol's most desirable locations.

The residential complex offers a peaceful and exclusive atmosphere surrounded by beautifully maintained Mediterranean gardens and a communal swimming pool overlooking the sea.

The apartment features a bright and open layout, creating a seamless connection between indoor and outdoor living. With approximately 90 m² of interior living space and a spacious terrace of around 77 m², the property is perfectly designed to enjoy the Mediterranean climate and breathtaking coastal scenery.

+34 952 939 460 · info@bromleyestatesmarbella.com Urbanizacion El Rosario, CN340, Km 188, Marbella, Malaga 29603

BROMLEY ESTATES

Marbella.

The open-plan living and dining area is filled with natural light through large windows and provides direct access to the terrace — an ideal setting for outdoor dining, relaxing, or simply enjoying the sound of the sea.

The functional kitchen integrates perfectly into the living area and offers practicality for everyday living as well as entertaining family and guests.

The property offers two comfortable bedrooms and two bathrooms. Its south-facing orientation ensures sunlight throughout the day and creates a warm and inviting atmosphere.

Residents also benefit from beautifully maintained communal areas, a swimming pool, and a parking space. Restaurants, shops, and additional amenities are conveniently located nearby.

Features and Highlights

Frontline beach location

Direct beach and sea access

Uninterrupted panoramic Mediterranean views

2 bedrooms

2 bathrooms

Approx. 90 m² interior living space

Approx. 77 m² terrace

South-facing orientation

Bright open-plan living and dining area

Large windows

Functional kitchen

Fitted wardrobes

Air conditioning

Communal swimming pool

Mediterranean landscaped gardens

parking space

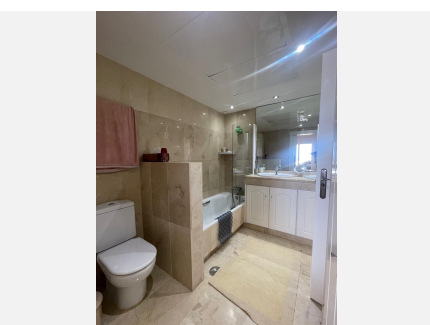
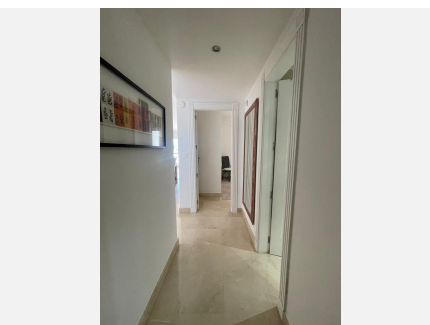
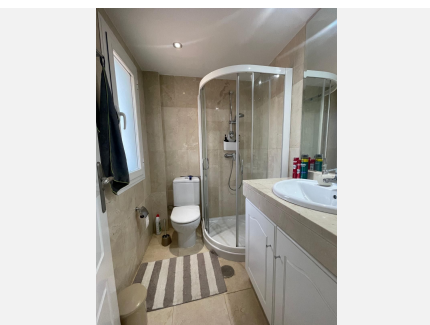
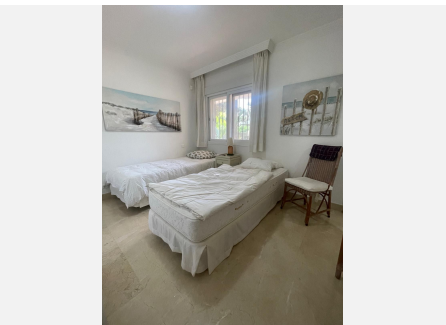
Built in 2003

Excellent condition

An ideal property as a permanent residence, elegant holiday home, or secure investment opportunity in one of the most exclusive beachfront areas of the Costa del Sol.

BROMLEY ESTATES

Marbella



BROMLEY ESTATES

Marbella

