



PENTHOUSE DUPLEX 3 BEDROOMS 2 BATHROOMS IN BENALMADENA PUEBLO

📍 Benalmadena Pueblo

REF# R5422066 €1,350,000

BEDS

3

BATHS

2

BUILT

180 m²

TERRACE

68 m²

The Crown Jewel of Stupa Hills.

An Exceptional Corner Penthouse Duplex with Unrivalled Views, in Benalmadena

You have just found what is arguably the finest Penthouse Duplex in Stupa Hills and with rental license. This extraordinary corner residence is a rare opportunity to own one of the most desirable homes within this prestigious development. Unlike most Penthouse Duplexes in Stupa Hills, this property offers a highly sought-after layout featuring both a spacious open-plan kitchen and dining area, as well as a separate living room, creating the perfect balance between entertaining and everyday comfort.

From the moment you enter, you are welcomed by an atmosphere of warmth, elegance, and exclusivity. Every detail has been carefully curated, with more than €130,000 worth of premium furnishings, designer awnings, and bespoke interior features included in the sale. The home is beautifully appointed with high-end Danish designer furniture, creating a sophisticated yet inviting living environment that is truly move-in ready.

+34 952 939 460 · info@bromleyestatesmarbella.com Urbanizacion El Rosario, CN340, Km 188, Marbella, Malaga 29603

BROMLEY ESTATES

Marbella.

The panoramic views are simply beyond compare

From sunrise to sunset, enjoy uninterrupted views across the sparkling Mediterranean Sea, the Bay of Fuengirola, and the stunning coastline beyond. As a unique privilege, this home also enjoys a direct and completely unobstructed view of the magnificent Buddhist Stupa, whose enchanting evening illumination creates a magical atmosphere unlike anything else on the Costa del Sol.

The feeling of serenity, warmth, and exclusivity that this Penthouse offers is in a class of its own. Whether enjoying a quiet morning coffee on the terrace or entertaining guests beneath the stars, every moment here feels extraordinary.

Stupa Hills is an exclusive residential development located in Benalmádena Pueblo

Next to the iconic Stupa temple. Nestled in a privileged enclave, it offers spectacular Mediterranean views, complete tranquillity, and an exceptional lifestyle on the Costa del Sol.

Its strategic location provides unrivalled connectivity, being less than 15 minutes from Málaga International Airport and just 30 minutes from Marbella. Beautiful beaches, the marina, international schools, healthcare facilities, fine dining, and world-class leisure amenities are all within easy reach.

The property includes two private parking spaces and a storage room.

Designed to maximise comfort and wellbeing

The residence features open-plan living spaces, floor-to-ceiling windows, and a south and south-east orientation that fills the home with natural light throughout the day while ensuring excellent energy efficiency and year-round thermal comfort.

The expansive terraces blend seamlessly with the interior spaces, creating a true Mediterranean lifestyle where indoor and outdoor living become one.

Residents of Stupa Hills enjoy an exceptional collection of premium amenities, including:

- Infinity swimming pool with breathtaking sea views.
- Exclusive spa and wellness area with heated indoor pool, hammam, sauna, and relaxation zones.
- Fully equipped fitness centre, yoga studio, and meditation room with panoramic views.
- Gated community with advanced video surveillance systems, ensuring privacy and security.

This is more than just a luxury property—it is a lifestyle statement.

A unique home that combines contemporary architecture, world-class amenities, extraordinary views, and one of the most privileged locations on the Costa del Sol. Equally perfect as a permanent residence, luxury holiday retreat, or high-value investment opportunity.

For those who refuse to compromise and seek only the very best, this is a home that simply has no equal.

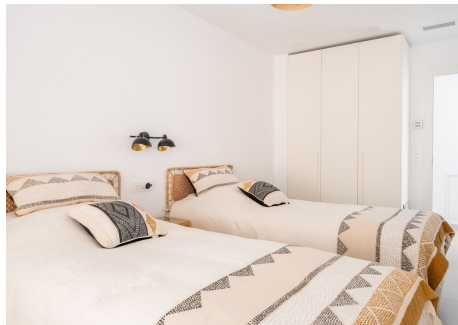
BROMLEY ESTATES

Marbella



BROMLEY ESTATES

Marbella



BROMLEY ESTATES

Marbella

