



TOWNHOUSE 4 BEDROOMS 3 BATHROOMS IN ESTEPONA

📍 Estepona

REF# R5427247 €698,000

BEDS

4

BATHS

3

BUILT

220 m²

TERRACE

50 m²

proud to exclusively present this outstanding townhouse located next to the prestigious Atalaya Golf & Country Club—a property designed for those who seek tranquility, golf, and the authentic Mediterranean lifestyle in one of the Costa del Sol's most desirable locations.

Some homes simply offer space. Others offer a lifestyle. This property delivers both. Surrounded by nature, just a short walk from the golf course, and ideally positioned between Marbella, Puerto Banús, Benahavís and Estepona, it provides the perfect balance of privacy, comfort and exceptional quality of life.

Offering over 200 m² of built area, the home is thoughtfully distributed across four levels, creating generous and versatile living spaces for the whole family.

Main Floor

BROMLEY ESTATES

Marbella

From the moment you enter, the abundance of natural light and spacious layout immediately stand out. The elegant living and dining area flows seamlessly into a contemporary open-plan kitchen, creating a welcoming environment ideal for both everyday living and entertaining. Large sliding doors connect the interior with the private garden, allowing indoor and outdoor living to blend effortlessly.

A convenient guest toilet completes this floor.

First Floor

The sleeping quarters feature three spacious bedrooms. The principal suite enjoys its own en-suite bathroom, while the remaining two bedrooms share a stylish family bathroom, providing both comfort and privacy.

Rooftop Terrace

The true highlight of this home is its spectacular private rooftop terrace of approximately 50 m²—an exceptional outdoor space where you can enjoy the Costa del Sol's privileged climate throughout the year.

Its generous size offers endless possibilities: create an elegant pergola, a stylish chill-out lounge, an outdoor dining area, a summer kitchen or a barbecue space. Imagine ending each day with a glass of wine while watching the sun disappear beyond the horizon as the sky turns golden. A truly special setting designed for unforgettable moments.

Basement

The lower level adds outstanding versatility rarely found in similar properties. It features a fourth bedroom, ideal as a guest suite, home office or independent accommodation for a family member.

There is also a private double garage with direct access to the house, together with a practical storage area.

A Location That Makes the Difference

Living at Atalaya Golf means waking up surrounded by nature, enjoying one of the Costa del Sol's most prestigious golf courses just moments from your doorstep, and experiencing exceptional peace and privacy without sacrificing convenience.

Beautiful beaches, international schools, restaurants, supermarkets and every essential service are all within just a few minutes' drive.

It is no coincidence that this area remains one of the preferred destinations for international buyers seeking lifestyle, security and long-term investment potential.

Property Highlights

- * Over 200 m² built across four levels
- * 4 bedrooms
- * 3 bathrooms plus guest WC
- * Modern open-plan kitchen

- * Spacious living and dining area
- * Spectacular 50 m² rooftop solarium
- * Private garden
- * Private independent garage for two vehicles with direct access to the house
- * Storage room
- * Just a few metres from Atalaya Golf & Country Club
- * Prime location between Marbella, Benahavís and Estepona

Properties offering this combination of space, location and lifestyle are becoming increasingly difficult to find.

We invite you to arrange a viewing and discover first-hand why Atalaya Golf is considered one of the Costa del Sol's most desirable places to live.

Key Features

- * Townhouse
- * Four floors
- * 202 m² built (190 m² usable)
- * 4 bedrooms
- * 3 bathrooms
- * Guest WC
- * 100 m² plot
- * Terrace and balcony
- * Private ?garage ?included ?in ?the price
- * ?Resale property in ?excellent condition
- * ?Built-in ?wardrobes
- * ?Storage ?room
- * East and west orientation
- * Built ?in ?2006
- * Individual ?electric ?heating

Features

- * ?Air ?conditioning
- * ?Swimming ?pool
- * ?Garden

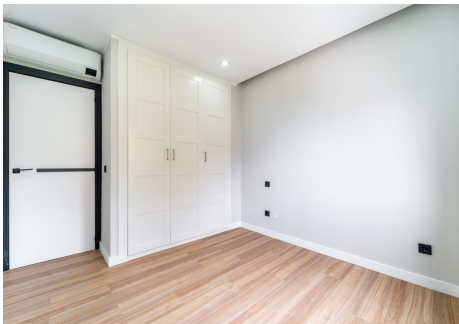
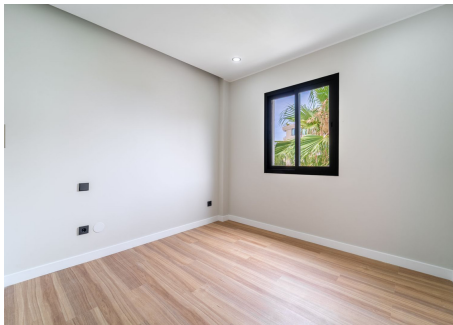
BROMLEY ESTATES

Marbella



BROMLEY ESTATES

Marbella



BROMLEY ESTATES

Marbella

