



## PENTHOUSE DUPLEX 3 BEDROOMS 3 BATHROOMS IN ELVIRIA

📍 Elviria

REF# R5432056 €1,399,000

BEDS

3

BATHS

3

BUILT

161 m<sup>2</sup>

TERRACE

46 m<sup>2</sup>

Luxury Corner Duplex Penthouse with Panoramic Sea Views in Elviria Hills, Marbella East

Set within the prestigious Elviria Hills urbanisation in Marbella East, this exceptional south-facing corner duplex penthouse offers an enviable combination of luxury, privacy, and breathtaking panoramic views across the Mediterranean coastline.

Bathed in natural light throughout the day, the spacious open-plan living and dining area flows seamlessly onto a generous sun-drenched terrace, creating the perfect setting for both relaxed outdoor living and elegant entertaining while enjoying uninterrupted panoramic views.

The recently renovated kitchen is beautifully appointed and complemented by a separate utility room, offering both style and practicality.

# BROMLEY ESTATES

*Marbella*

The main level comprises two generously sized guest bedrooms and two bathrooms, one of which is en-suite, providing comfortable accommodation for family and guests. Occupying the entire upper floor, the impressive master suite serves as a private retreat, featuring a luxurious en-suite bathroom and an elevated position that maximises the spectacular surrounding views. The property comes with underground parking and a storage room.

This property enjoys a privileged location overlooking the renowned Greenlife Golf Club. Residents are just steps away from the beautifully maintained 9-hole par-3 golf course, one of Marbella's most popular practice facilities, featuring an extensive driving range with Toptracer technology, professional golf academy, tennis courts, fitness centre, and clubhouse.

Located in one of Marbella East's most sought-after residential communities, Elviria Hills has several pools and maintained gardens, it is renowned for its tranquil surroundings, beautifully maintained gardens, and high-quality amenities. The property is ideally positioned just minutes from the vibrant commercial centre of Elviria, an excellent selection of restaurants, cafés, and shops, as well as some of the Costa del Sol's finest sandy beaches.

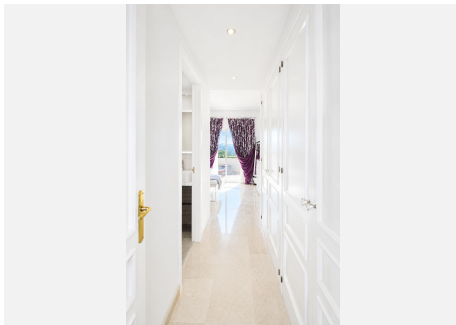
Families will appreciate the proximity to several renowned international schools, making this an outstanding choice as both a permanent residence and a luxurious holiday home. Malaga airport is only a short 30 minutes drive away.

A rare opportunity to acquire a sophisticated penthouse in an exclusive location, offering exceptional indoor-outdoor living, stunning sea views, and easy access to all that Marbella has to offer.



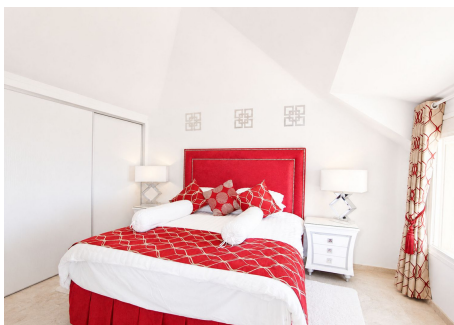
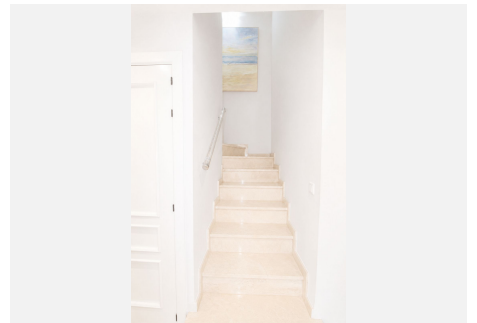
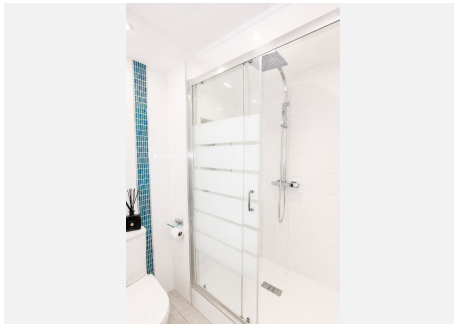
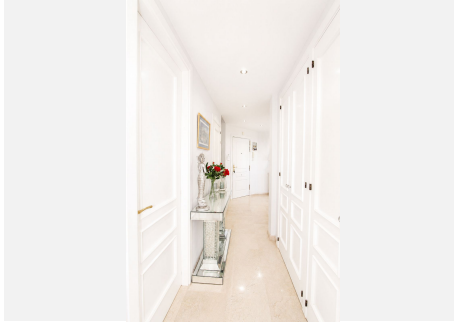
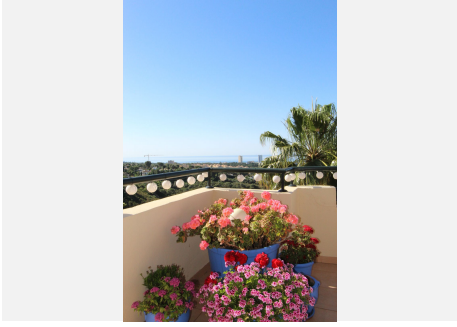
# BROMLEY ESTATES

*Marbella*



# BROMLEY ESTATES

*Marbella*



# BROMLEY ESTATES

*Marbella*

