



HOUSE 6 BEDROOMS 6 BATHROOMS IN SAN PEDRO DE ALCANTARA

📍 San Pedro de Alcantara

REF# BEMR3229714 €4,250,000

BEDS

6

BATHS

6

BUILT

561 m²

PLOT

806 m²

TERRACE

221 m²

Spacious beachside villa in popular San Pedro, a short drive west of Marbella and Puerto Banús, and within walking distance of the beach promenade, shops and restaurants. This house is set in manicured gardens with a swimming pool, offering a perfect combination of indoor and outdoor spaces, including a fantastic 120m² roof terrace with panoramic views.

On the entrance level, we find an entrance hall, a living room with fireplace, a dining room connected to a large fully equipped kitchen with breakfast area, a laundry/utility room, a guest toilet and an en-suite guest bedroom. Additionally, there is a large covered terrace overlooking the pool.

On the upper floor, there are two guest suites with terraces, and the master suite with a sunny open terrace and access to the roof terrace.

BROMLEY ESTATES

Marbella

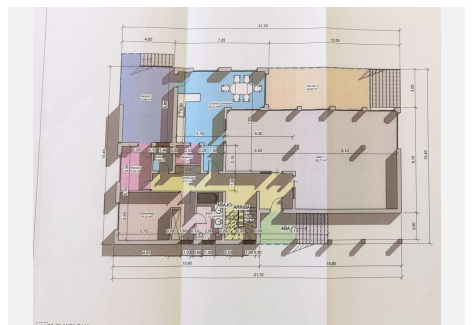
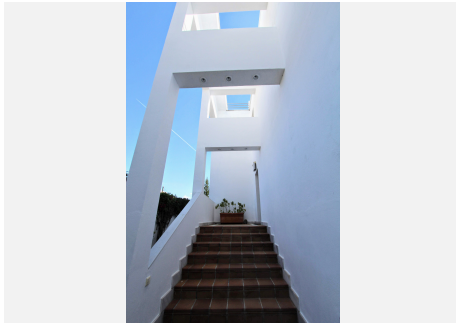
The naturally lit basement offers a games room, two additional bedrooms (for beds), a family bathroom and a large garage that can accommodate 3-4 cars. There are also storage areas and engine rooms.

This villa offers a spacious and comfortable environment, with a well thought out layout that makes the most of the different areas of the house. The location close to the beach and the amenities of San Pedro, as well as the ease of access to Marbella and Puerto Banús, make it an ideal option for those looking to enjoy a relaxed lifestyle on the Costa del Sol.



BROMLEY ESTATES

Marbella



BROMLEY ESTATES

Marbella

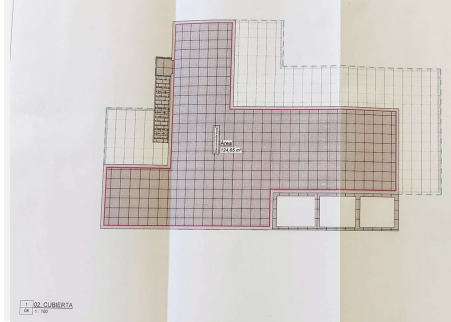
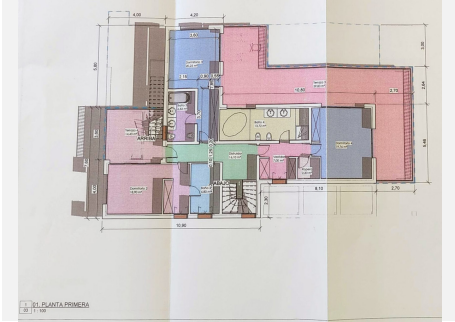


Tabla de SUPERFICIES ÚTILES					
Nivel	Nombre	Area	Perimetro	Volumen	
01	BORDADO	ESCALAS	3.00 m ²	11.00	138.00 m ³
01	BORDADO	Balcón	28.24 m ²	11.70	126.00 m ³
01	BORDADO	Balcón	8.76 m ²	12.00	21.24 m ³
01	BORDADO	Distribuidor	24.82 m ²	12.00	148.92 m ³
01	BORDADO	Zona de	31.25 m ²	22.74	74.26 m ³
01	BORDADO	Alcoba	11.00 m ²	12.00	74.40 m ³
01	BORDADO	Habitación 1	110.28 m ²	12.00	1323.36 m ³
01	BORDADO	Habitación 2	110.28 m ²	12.00	1323.36 m ³
01	BORDADO	Alcoba	88.57 m ²	12.00	648.84 m ³
02	PLANTA BALCON	Balcón	11.69 m ²	14.00	524.80 m ³
02	PLANTA BALCON	Distribuidor	13.21 m ²	14.00	48.14 m ³
02	PLANTA BALCON	Baño 1	11.10 m ²	17.10	171.00 m ³
02	PLANTA BALCON	Habitación	124.94 m ²	11.70	1461.50 m ³
02	PLANTA BALCON	Distribuidor	27.27 m ²	14.14	386.31 m ³
02	PLANTA BALCON	Terraza 1	20.80 m ²	17.40	361.84 m ³
02	PLANTA BALCON	Terraza 2	14.85 m ²	10.00	148.50 m ³
02	PLANTA BALCON	Corredor-Comedor	24.10 m ²	10.00	174.10 m ³
02	PLANTA BALCON	Alcoba	12.68 m ²	8.60	84.64 m ³
02	PLANTA BALCON	Habitación	12.82 m ²	8.80	84.80 m ³
02	PLANTA BALCON	Habitación	24.21 m ²	17.00	371.57 m ³
02	PLANTA PRIMERA	Distribuidor 1	18.80 m ²	24.21	49.40 m ³
02	PLANTA PRIMERA	Baño 2	8.40 m ²	11.80	118.40 m ³
02	PLANTA PRIMERA	Distribuidor	16.14 m ²	22.18	221.80 m ³
02	PLANTA PRIMERA	Baño 4	13.72 m ²	18.85	188.47 m ³
02	PLANTA PRIMERA	Distribuidor 2	16.74 m ²	14.62	146.20 m ³
02	PLANTA PRIMERA	Habitación	17.20 m ²	14.30	172.00 m ³
02	PLANTA PRIMERA	Distribuidor 3	20.50 m ²	14.60	146.00 m ³
02	PLANTA PRIMERA	Baño 3	8.82 m ²	11.90	118.60 m ³
02	PLANTA PRIMERA	Terraza 3	19.84 m ²	19.20	198.40 m ³
02	PLANTA PRIMERA	Terraza 4	14.43 m ²	10.22	104.20 m ³
02	PLANTA PRIMERA	Comedor	21.40 m ²	8.84	88.40 m ³
02	PLANTA PRIMERA	Habitación	188.80 m ²	11.00	43.10 m ³
02	CUBIERTA	Habitación	108.00 m ²	66.28	307.88 m ³
02	CUBIERTA	Habitación	108.00 m ²	66.28	307.88 m ³
02	general: 02		744.27 m ²	647.58	1883.00 m ³

Área CONSTRUIDA			
Nivel	Nombre	Area	Tipo de área
02	CUBIERTA	104.88 m ²	Área construida bruta
02	PLANTA PRIMERA	211.81 m ²	Área construida bruta
02	CUBIERTA	104.88 m ²	Área construida neta
02	PLANTA BALCON	208.12 m ²	Área construida bruta
02		84.81 m ²	