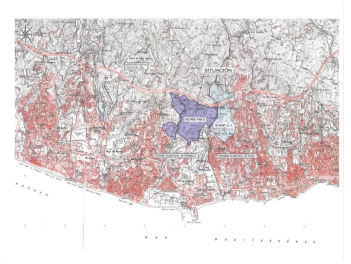
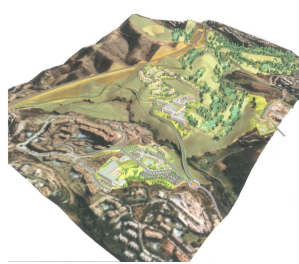
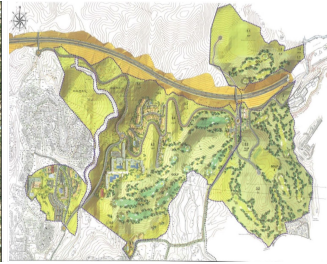
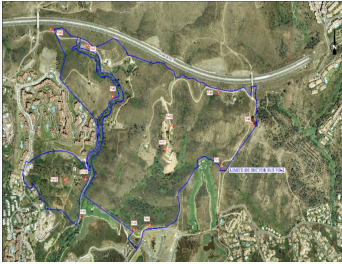
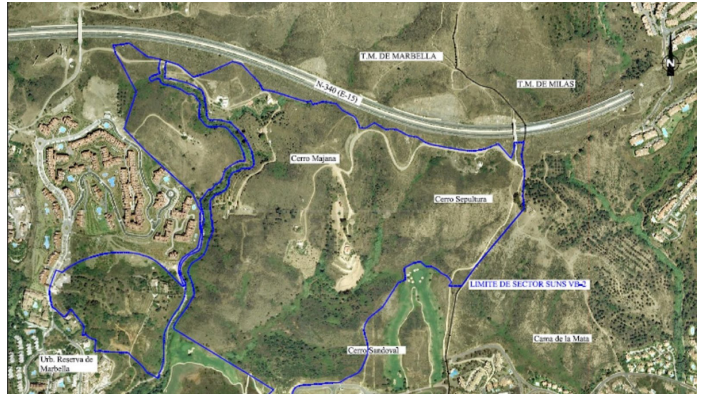


BROMLEY ESTATES

Marbella

PROPUESTA DE ORDENACIÓN
SECTOR SUNS.VB-2 FINCA 'LA VIZCAINA'
MARBELLA



PLOT BEDROOMS BATHROOMS IN LAS CHAPAS

📍 Las Chapas

REF# BEMR4360702 €2,146,000

BEDS

BATHS

BUILT

PLOT

m²

21458 m²

This sector has a total area of 710,458 m², of which 21,458 m² corresponds to this farm. It represents 3.02% of rights and obligations.

The sector has a buildable area of 57,234.29 m² for Free Income Housing IN LOW DENSITY,

380 houses in Poblado Mediterráneo and 11 isolated houses.

Buildable area of 40,362 m² for Hotels.

3,000 m² Economic Activities Golf Club and Commercial Area

Which makes a total of 100,596.29 m² of surface area. Therefore $100,596.29 \text{ m}^2 \times 3.02\% = 3,038 \text{ m}^2$ of buildable area, which would correspond to this plot.