



MIDDLE FLOOR APARTMENT 3 BEDROOMS 2 BATHROOMS IN ISTAN

 **Istan**

REF# R4585324 **€580,000**

BEDS

3

BATHS

2

BUILT

108 m²

TERRACE

39 m²

32 exclusive apartments with the best panoramic views at the highest part of the development.

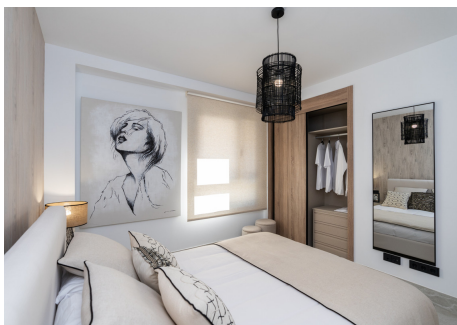
All the homes have unrestricted views with a south-easterly aspect towards the Marbella Bay and Gibraltar.

The project includes 4 blocks of 3 floors with homes in contemporary “open plan” style but with a rustic appearance that blends into the natural surroundings. Apartments with 2 and 3 bedrooms and penthouses with a solarium, with large terraces, communal pool and gardens with autochthonous plants.

The homes are delivered fully equipped, with premium brand finishings, ready to move in. They also have an underground parking space and a storeroom.

BROMLEY ESTATES

Marbella



BROMLEY ESTATES

Marbella



BROMLEY ESTATES

Marbella

